



PIAGGIO & C.s.p.a.



SPARE PARTS CATALOGUE

Vespa PX 125 2011

Chassis prefix: ZAPM74100

Engine prefix: M741M



Index

Finished products.....	4
Alphanumeric index.....	5
Engine.....	9
Table 01.02 - Engine, assembly.....	9
Table 01.05 - Crankcase.....	10
Table 01.06 - Crankshaft.....	12
Table 01.07 - Cylinder-piston-rod pin unit.....	13
Table 01.15 - Crankcase cover - Crankcase cooling.....	14
Table 01.18 - Oil pump.....	15
Table 01.20 - Stator - Electric starter.....	16
Table 01.21 - Flywheel magneto.....	18
Table 01.23 - Flywheel magneto cover - Oil filter.....	19
Table 01.28 - Rear transmission.....	20
Table 01.31 - Gear-box components.....	21
Table 01.35 - Rear brake - Brake jaw.....	23
Table 01.39 - Carburettor, assembly - Union pipe.....	24
Table 01.40 - Carburetor's components.....	25
Table 01.42 - Silencer.....	26
Table 01.45 - Air filter.....	27
Table 01.46 - Secondary air box.....	28
Frame - Plastic parts - Coachwork.....	29
Table 02.01 - Frame/bodywork.....	29
Table 02.25 - Stand/s.....	30
Table 02.30 - Front glove-box - Knee-guard panel.....	31
Table 02.31 - Central cover - Footrests.....	32
Table 02.32 - Side cover - Spoiler.....	33
Table 02.33 - Wheel housing - Mudguard.....	34
Table 02.36 - Front covers - Mudflaps.....	35
Table 02.38 - Plates - Emblems.....	36
Table 02.39 - Saddle/seats - Tool roll.....	37
Table 02.45 - Driving mirror/s.....	38
Table 02.46 - Locks.....	39
Table 02.47 - Fuel tank.....	40
Table 02.52 - Oil tank.....	41
Handlebars/Steering.....	42
Table 03.01 - Handlebars coverages.....	42
Table 03.02 - Meter combination - Cruscotto.....	43
Table 03.06 - Handlebars - Master cil.....	44
Suspensions - Wheels.....	46
Table 04.07 - Front suspension - Shock absorber/s.....	46
Table 04.10 - Rear suspension - Shock absorber/s.....	47
Table 04.11 - Front wheel.....	48
Table 04.12 - Rear wheel.....	49



Braking system - Transmissions.....	50
Table 05.01 - Brakes pipes - Calipers.....	50
Table 05.03 - Transmissions.....	51
Table 05.05 - Control pedals - Levers.....	52
Electrical system.....	53
Table 06.01 - Selectors - Switches - Buttons.....	53
Table 06.03 - Front headlamps - Turn signal lamps.....	54
Table 06.04 - Rear headlamps - Turn signal lamps.....	55
Table 06.05 - Remote control switches - Battery - Horn.....	56
Table 06.06 - Voltage Regulators - Electronic Control Units (ecu) - H.T. Coil.....	57
Table 06.08 - Main cable harness.....	58



Finished products

Code	Validity
NVMA000U01	
NVMA91GU01	Vehicle colour: Nero[94]
NVMABRGU01	Vehicle colour: Bianco[544]
NVMADIGU01	Vehicle colour: Azzurro[244/A]
NVMAR7GU01	Vehicle colour: Rosso[894]



Code	No. table	Pos.	Code	No. table	Pos.	Code	No. table	Pos.
000061	01.35	3	012555	01.21	10	018503	06.01	2
000097	01.06	7	012761	01.35	2	018503	06.01	9
000267	01.21	12	012761	05.05	3	018515	06.01	12
000397	01.31	17	012789	04.07	23	018527	06.01	8
002457	01.31	24	012789	04.12	8	018572	01.40	15
002612	01.45	17	013010	01.31	47	018639	01.31	41
002613	01.45	16	013762	01.40	14	018699	03.06	10
003038	01.20	8	013763	02.39	8	0193014	01.31	36
0030535	01.21	13	013763	06.03	6	020003	06.08	4
003054	02.01	6	013782	06.08	3	020005	06.06	17
003054	06.01	4	013880	02.33	16	020008	01.20	9
003054	06.03	2	013940	01.35	11	020008	04.10	10
003055	01.21	8	013963	06.05	12	020008	04.11	8
003055	02.36	2	014246	01.45	21	020008	04.12	1
003055	03.01	3	014457	01.31	32	020104	02.01	10
003055	06.06	13	014467	02.33	1	020104	06.03	12
003056	05.05	7	014565	01.05	25	020105	01.05	33
003056	06.06	1	014691	01.42	7	020105	01.31	53
003057	01.05	18	014726	02.30	1	020105	02.30	3
003057	01.31	21	014743	01.45	5	020105	02.33	5
003058	01.20	23	015231	01.31	22	020106	06.06	21
003058	02.39	12	015317	01.35	10	020106	06.06	3
003208	01.35	8	015341	01.42	6	020107	01.05	16
0037514	04.07	15	015467	02.47	21	020107	01.05	20
003972	01.05	4	015478	02.52	4	020107	01.31	19
005765	01.31	27	015510	01.35	15	020108	01.20	25
006018	02.33	2	015522	01.15	2	020108	02.32	19
006018	06.06	14	015585	01.21	6	020108	04.07	19
006408	01.18	2	015585	06.03	8	020108	04.11	1
006422	04.11	18	015597	06.06	15	020108	04.12	15
006615	01.07	2	015727	02.33	12	020207	01.05	31
006628	01.20	16	015737	01.21	14	020210	04.10	4
006635	04.11	10	015835	03.01	4	021112	01.21	11
006642	01.31	46	015861	01.20	6	021114	04.11	19
006647	01.28	2	015881	06.06	25	021210	02.52	10
006662	01.06	14	015911	02.36	3	021210	04.07	13
006708	01.18	13	015946	01.23	1	021214	04.10	6
006708	01.31	38	015946	05.03	5	023823	01.05	32
006714	01.35	5	015994	06.04	3	024041	02.32	11
006721	01.20	5	015994	06.05	13	026018	01.40	2
006731	04.07	4	015996	02.01	7	030102	04.10	11
006964	01.18	6	016305	01.31	49	030209	01.31	45
006965	01.21	7	016404	02.01	8	030262	01.45	6
006968	02.32	5	016404	06.01	5	030280	01.31	16
006975	05.01	14	016405	01.45	13	031027	02.39	9
006976	06.05	8	016405	02.39	6	031027	06.03	7
006977	01.05	19	016405	06.06	16	031033	06.01	3
006977	01.05	22	016406	01.20	19	031057	05.01	13
006977	01.15	3	016406	01.23	2	031086	01.20	20
007609	02.45	4	016406	02.25	7	031086	06.05	9
008265	02.46	5	016406	06.06	2	031088	06.06	4
008339	01.18	7	016406	06.06	20	031088	06.08	5
008372	02.36	4	016407	01.31	20	031091	05.05	16
008375	06.06	6	016408	01.20	24	031119	04.07	22
008419	01.05	25	016408	01.20	7	038477	01.31	2
008818	05.05	4	016408	02.32	18	042047	01.35	12
009101	01.28	10	016408	02.39	17	046168	02.47	15
011288	01.05	2	016408	04.07	20	046740	01.31	39
012112	03.06	7	016408	04.11	2	047218	01.20	1
012485	01.05	30	016408	04.12	14	047944	01.05	8
012528	02.30	2	016409	01.40	20	047945	01.05	7
012528	02.33	4	016410	01.42	8	048988	01.05	11
012532	02.46	4	016612	01.31	14	050207	05.03	7
012532	06.03	9	016673	02.39	3	0519924	01.07	3
012539	01.35	9	017492	03.06	4	052575	01.07	4
012540	02.39	13	017781	01.31	35	056649	02.32	2
012554	06.08	2	018074	02.32	8	057371	02.39	7



Code	No. table	Pos.	Code	No. table	Pos.	Code	No. table	Pos.
058364	01.45	3	118058	01.28	1	1745151	01.31	23
0586524	01.06	3	119219	04.07	3	174735A	01.31	54
0593652	01.31	8	121668	01.05	27	174773	02.25	1
059588	01.05	10	125998	02.45	5	174806	04.07	21
059589	01.05	6	127927	05.01	5	1748254	01.31	42
059590	01.05	9	127966	06.06	24	175330	02.47	13
060536	04.10	12	130291	01.42	2	175369	03.06	25
070144	06.01	7	133068	01.06	12	1761606	02.25	9
070286	02.32	6	1331545	01.06	1	176166	02.25	10
070620	03.06	16	133223	01.18	1	176168	02.25	5
070994	05.05	10	133238	01.45	9	176444	02.25	2
071165	05.05	2	133578	01.45	18	177408	04.07	8
073111	02.30	14	137267	03.06	17	177414	04.11	17
073260	02.30	5	137267	03.06	24	177436	05.01	12
077252	02.25	11	137389	04.10	3	177442	04.11	14
07737001	01.31	43	138345	01.31	18	177443	04.11	15
07737101	01.31	28	138393	01.28	11	177445	04.07	7
078163	01.05	23	1384746	05.05	5	177451	04.07	6
078307	01.15	4	138865	01.31	44	177494	05.01	11
078307	01.23	4	138934	02.47	12	177508	05.01	15
0784825	01.05	24	138935	02.47	5	177521	04.07	10
078521	01.05	29	139100	01.31	26	177609	04.11	21
078522	01.35	4	139433	01.05	28	177610	04.11	11
078853	01.31	29	139778	03.06	19	178209	02.46	1
081803	04.10	5	139796	03.06	26	178338	01.05	17
082931	01.40	6	139797	03.06	14	178562	02.46	11
082933	01.40	18	139890	03.06	13	178563	02.46	10
083139	02.47	20	139890	03.06	20	178689	02.46	8
083806	01.31	34	139933	02.47	3	178790	01.42	9
084262	02.47	11	141589	06.06	18	179108	04.10	2
0846315	04.11	5	141590	06.06	19	179230	03.02	3
0846315	04.12	13	145298	01.21	15	179292	02.30	12
085285	01.40	4	145298	03.02	5	179292	02.46	16
085291	01.40	21	145298	05.03	16	179503	06.06	26
085293	01.40	23	145298	06.01	10	179504	06.06	22
085295	01.40	27	145298	06.08	10	179510	01.20	26
085299	01.40	1	146086	01.18	15	179514	01.20	17
085304	01.40	10	146087	01.18	11	179516	01.20	27
086947	01.40	8	146129	01.05	14	1797754	02.31	11
087975	01.45	2	146504	02.47	10	1797764	02.31	3
0898582	01.31	33	148570	01.20	2	179777	02.31	12
090306	01.35	14	149104	04.07	16	179778	02.31	4
090527	01.31	48	149908	02.30	9	179779	02.31	13
090541	05.03	15	150235	03.06	3	179780	02.31	5
0905734	01.07	8	150656	01.05	3	179895	06.06	7
090574	05.03	17	152210	05.03	11	181475	02.01	5
092395	01.40	19	1528054	01.28	7	181746	06.04	4
092712	01.40	11	154564	01.02	2	181747	06.04	5
094779	01.35	13	154754	01.40	7	181762	03.06	27
0971815	01.35	6	154792	01.39	2	181881	06.01	6
097523	02.30	13	154817	01.02	3	182049	05.05	17
097733	02.33	3	156038	02.52	7	182144	02.31	1
097733	03.06	6	156400	01.05	5	182174	02.31	2
097734	03.06	5	156401	05.03	2	182302	02.31	9
097804	01.06	15	156490	02.52	2	182599	06.03	10
0979844	01.31	40	156491	02.52	11	182872	05.05	6
1001014	01.35	7	156946	02.32	7	183124	05.05	13
101474	03.06	12	159804	02.47	22	183321	05.03	10
102585	02.47	1	159873	02.32	4	191695	01.07	1
102586	02.52	13	164634	03.02	2	191804	05.03	18
102587	02.52	3	165791	01.21	3	191962	06.05	6
106956	01.20	4	166366	01.21	5	192598	02.33	11
113010	01.40	16	166657	01.21	2	193870	01.40	5
113060	01.45	10	174085	04.07	18	193878	01.21	9
113291	01.45	19	174088	04.07	24	194380	05.05	14
1135264	01.31	25	1743125	01.20	10	194423	04.12	9
1139954	01.31	37	174514	01.05	15	1946100001	01.07	5

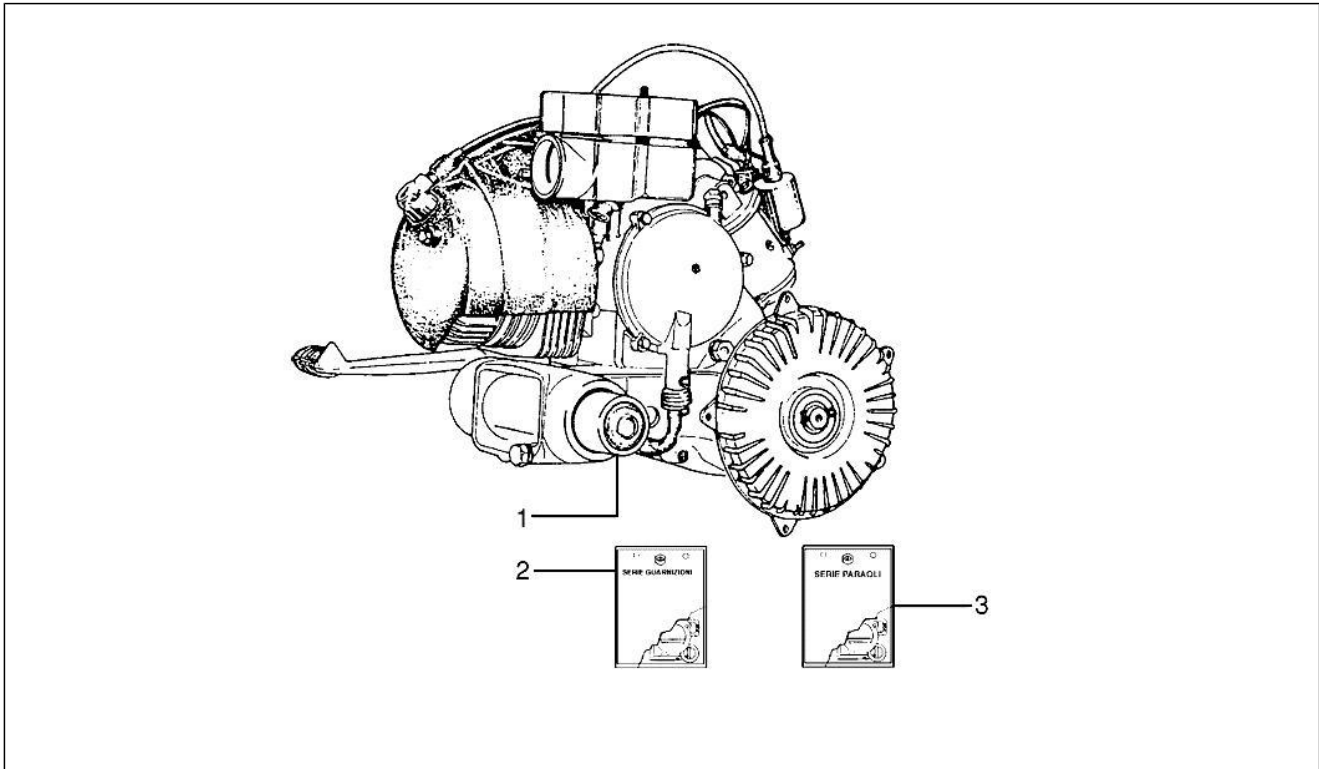


Code	No. table	Pos.	Code	No. table	Pos.	Code	No. table	Pos.
1946100002	01.07	5	237271	01.31	6	290405	06.08	9
1946100003	01.07	5	237272	01.31	13	291017	06.06	11
194631	02.47	19	238873	01.18	8	292022	06.03	11
195087	02.32	16	2389325	01.18	9	296172	02.52	9
195482	02.39	5	238969	01.05	21	297498	01.20	21
195703	06.06	8	239017	01.45	14	297777	02.46	9
195740	06.06	9	239049	01.45	4	327145	03.06	23
1965846	01.31	54	239089	01.40	3	400282	01.18	14
196585	01.31	52	2391685	01.45	15	4144504	01.35	1
197983	04.11	22	239178	01.39	1	414779	02.47	14
198513	04.07	2	239265	01.40	30	415519	04.12	5
198970	01.40	9	239851	01.20	27	431121	01.06	11
199190	02.38	3	240165	02.39	14	431122	01.06	13
214191	03.02	4	240166	02.39	11	434735	01.28	3
215809	01.31	31	240241	04.11	4	478533	01.46	5
216053	02.32	17	240241	04.12	12	484993	01.05	13
216895	06.05	4	240997	01.20	28	486942	01.46	3
217280	02.33	14	241004	01.20	11	486943	01.46	6
217421	01.20	3	241089	01.40	12	487042	01.07	7
217866	01.21	1	241167	02.32	23	487724	01.06	8
217871	02.47	18	241559	02.32	22	500541	01.06	4
217872	02.47	6	242092	02.01	3	500542	01.06	4
218812	06.05	3	242277	01.40	28	500543	01.06	4
218820	06.08	11	2425314	03.06	9	500544	01.06	4
219002	02.47	7	2427724	04.12	4	561867	02.39	2
219277	02.25	8	243154	01.28	13	56219R	03.06	1
2193565	03.06	11	244093	02.46	2	563728	04.12	6
219857	02.39	10	244095	02.32	9	563762	04.11	12
2216125	01.18	12	244128	06.06	23	5637895	03.01	2
221693	01.07	4	245451	02.52	8	563804	05.01	9
2232255	01.28	12	247556	01.45	1	563806	05.01	4
2232264	01.28	8	247652	01.40	22	5638116	02.33	10
2232294	01.28	5	248293	01.20	14	563873	04.11	3
2232324	01.28	9	248419	01.46	15	56395R	04.11	20
2232334	01.28	6	249235	01.20	22	564014	01.46	17
223604	01.05	12	249336	01.20	15	564053	05.01	10
225170	01.20	18	252945	06.08	7	5640715	04.07	1
225564	01.20	12	254485	06.04	8	564219	02.33	13
225878	01.20	29	258555	02.25	6	564222	04.07	9
226823	02.32	3	258733	02.25	5	564606	01.42	5
227153	02.39	16	258826	02.31	8	573918	02.33	15
227205	01.45	7	259151	01.46	16	574682	02.01	1
227229	02.46	6	259420	02.01	11	5758016	02.32	20
227273	02.32	15	259830	02.33	9	575825	02.47	2
227673	02.45	6	265451	05.01	6	576464	02.38	2
228090	02.47	17	266299	05.05	1	5769690090	02.01	4
228354	02.47	16	266841	05.01	3	576998	02.30	15
2283725	02.47	4	267420	02.39	15	57725201	02.01	2
229796	04.11	13	269273	05.03	6	577267	02.39	4
229796	04.12	3	271147	04.11	16	5775136	02.32	12
230051	06.05	2	271451	01.20	13	577594	02.30	7
230320	06.04	6	271596	05.01	7	580347	06.08	1
230365	02.47	8	272606	05.03	1	580395	06.01	14
230750	06.05	1	272842	06.05	11	580617	06.08	12
2308245	06.06	12	2850795	01.31	3	580906	05.03	9
231024	06.01	11	285452	01.31	50	580908	05.03	14
231215	06.03	3	2854751	01.31	51	580937	06.01	13
232661	06.06	5	2856075	01.23	3	58115R	06.05	10
233707	06.06	10	286782	01.31	5	58144R	06.05	7
233765	01.21	4	2868994	01.31	10	582946	06.03	1
235615	01.31	7	287014	01.18	5	582964	03.02	7
235747	01.45	11	287038	01.18	3	583074	03.02	1
2359081	01.28	4	288245	02.33	6	583081	06.04	1
2362224	01.31	30	2886506	01.31	1	583090	06.01	1
236402	01.18	4	289607	01.31	9	5832096	02.01	9
237267	01.31	4	290402	06.08	6	583330	06.01	15
237268	01.31	12	290404	06.08	8	584004	06.03	4



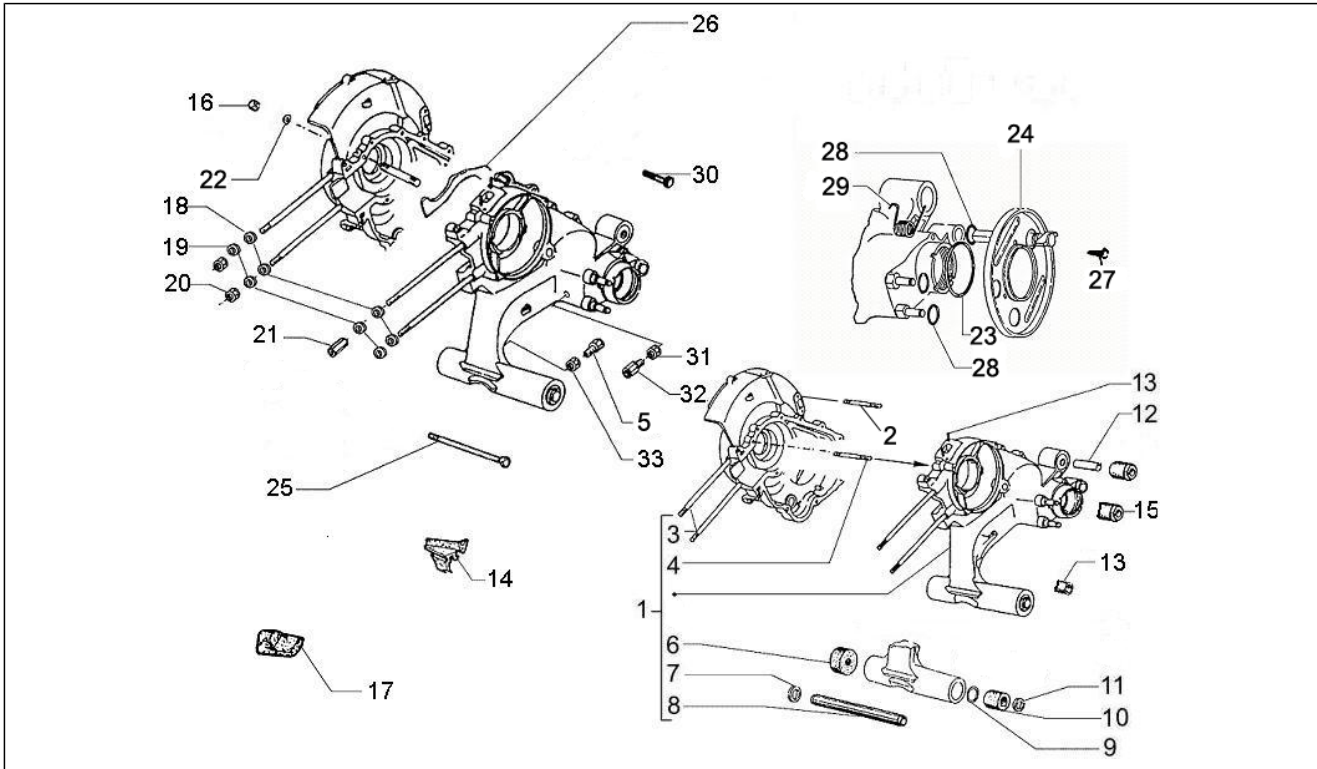
Code	No. table	Pos.	Code	No. table	Pos.
584004	06.04	7	844165	01.46	7
584810	06.05	5	845498	01.31	11
58570R	04.07	14	AP8106795	01.40	26
58571R	04.10	9	AP8222645	01.40	17
58573R	05.01	1	B0136705	01.02	1
597452	02.32	1	B013737	01.05	26
597452	04.11	6	B013738	01.31	15
597452	04.12	10	B013739	01.45	8
597453	04.11	7	B013740	01.40	13
597453	04.12	11	B013741	01.18	10
599009	03.06	2	B0141205	01.45	20
601102	05.03	12	B0146325	01.42	1
601105	05.03	13	B014633	01.42	3
622391	02.45	7	B014635	01.42	4
622427	02.45	8	CM001904	01.46	11
6224306	03.01	1	CM001905	01.46	10
623139	02.52	1	CM002311	02.52	6
623140	02.52	12	CM002904	02.52	14
623327	02.30	4	CM002904	02.52	5
638761	06.03	5	CM002910	02.47	9
638762	06.03	5	CM028001	02.45	2
638763	06.04	2	CM028002	02.45	3
638764	06.04	2	CM028003	02.45	1
642032	03.06	21	CM083805	03.06	8
646566	05.03	4	CM083806	03.06	18
646805	03.06	28			
646806	03.06	28			
647176	05.01	2			
650075	04.07	11			
650693	04.07	12			
655554	03.06	22			
656219	02.38	4			
656220	02.38	5			
667058	04.07	5			
667059	04.11	9			
667059	04.12	2			
667060	04.10	1			
667061	04.10	8			
667062	04.10	7			
667181	05.03	8			
667208	05.03	3			
6727925	02.36	1			
672942	02.30	6			
672943	02.30	8			
673199	02.31	6			
673200	02.31	7			
6732010090	02.31	10			
6732305	02.30	11			
673231	02.30	10			
673234	02.38	1			
673291	02.39	1			
709047	03.06	15			
709047	04.07	17			
709047	05.01	8			
827209	01.46	2			
827443	01.46	14			
827444	01.46	18			
827444	01.46	9			
82758R	01.46	4			
827708	04.12	7			
828493	01.45	12			
832620	01.46	12			
840087	01.07	6			
8410315	01.05	1			
843530	01.15	1			
843714	01.46	8			
8439575	01.46	1			

Group	Engine
Code	01.02
Description	Engine, assembly
Service	1



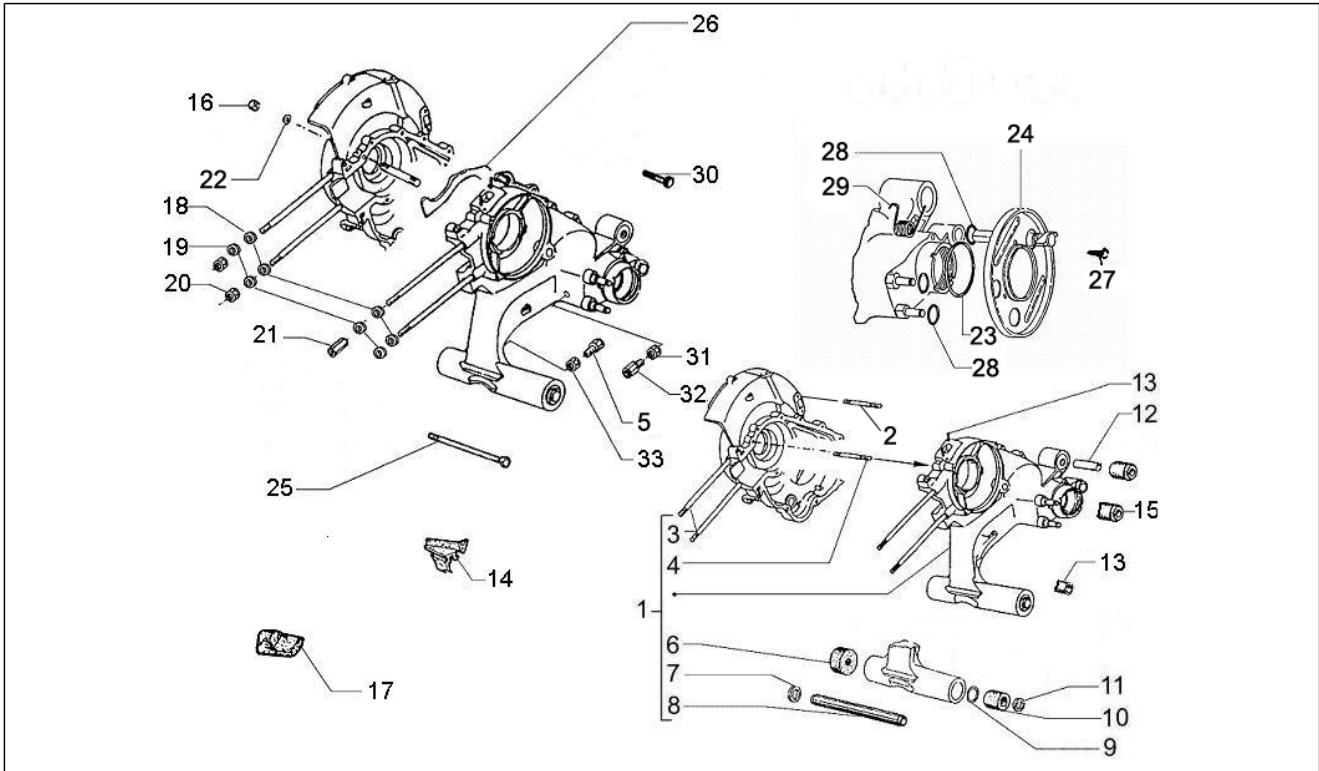
Pos.	Code	Description	Qty	Variants
1	B0136705	Motore 125 2T Euro 3	1	
2	154564	Gaskets set	1	
3	154817	Oil seal set	1	

Group	Engine
Code	01.05
Description	Crankcase
Service	1



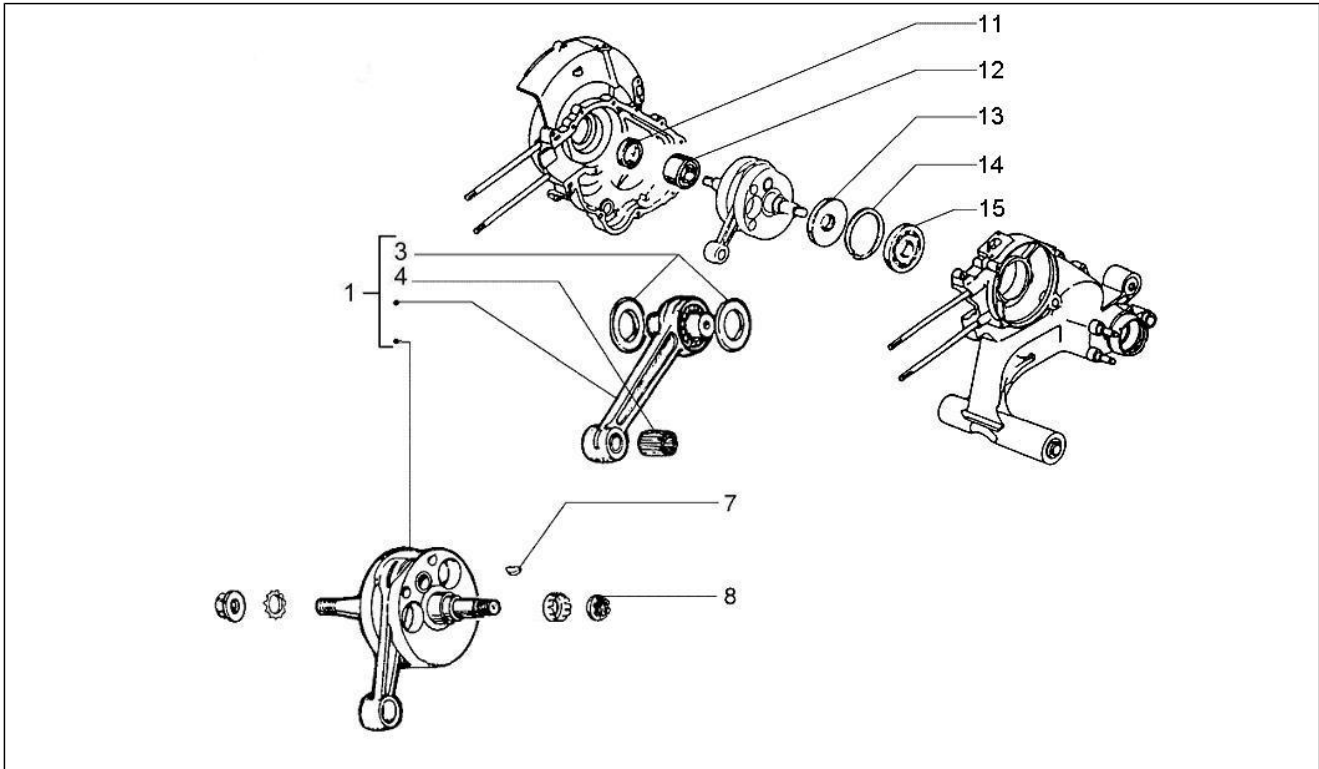
Pos.	Code	Description	Qty	Variants
1	8410315	Crankcase assembly	1	
2	011288	Stud bolt	4	
3	150656	Stud bolt	4	
4	003972	Stud bolt	3	
5	156400	Screw	1	
6	059589	Ring	1	
7	047945	Ring	1	
8	047944	Pipe	1	
9	059590	Ring	1	
10	059588	Ring	1	
11	048988	Ring	1	
12	223604	Spacer	1	
13	484993	Locating dowel	1	
14	146129	Rib	1	
15	174514	Shell	1	
16	020107	Nut	12	
17	178338	Drift	2	
18	003057	Washer	4	
19	006977	Washer	4	
20	020107	Nut	3	
21	238969	Nut	1	
22	006977	Washer	12	
23	078163	Gasket	1	
24	0784825	Dust cover	1	
25	008419	Bolt	1	
25	014565	Bolt	1	
26	8013737	Half crankcase gasket	1	
27	121668	Screw	3	

Group	Engine
Code	01.05
Description	Crankcase
Service	1



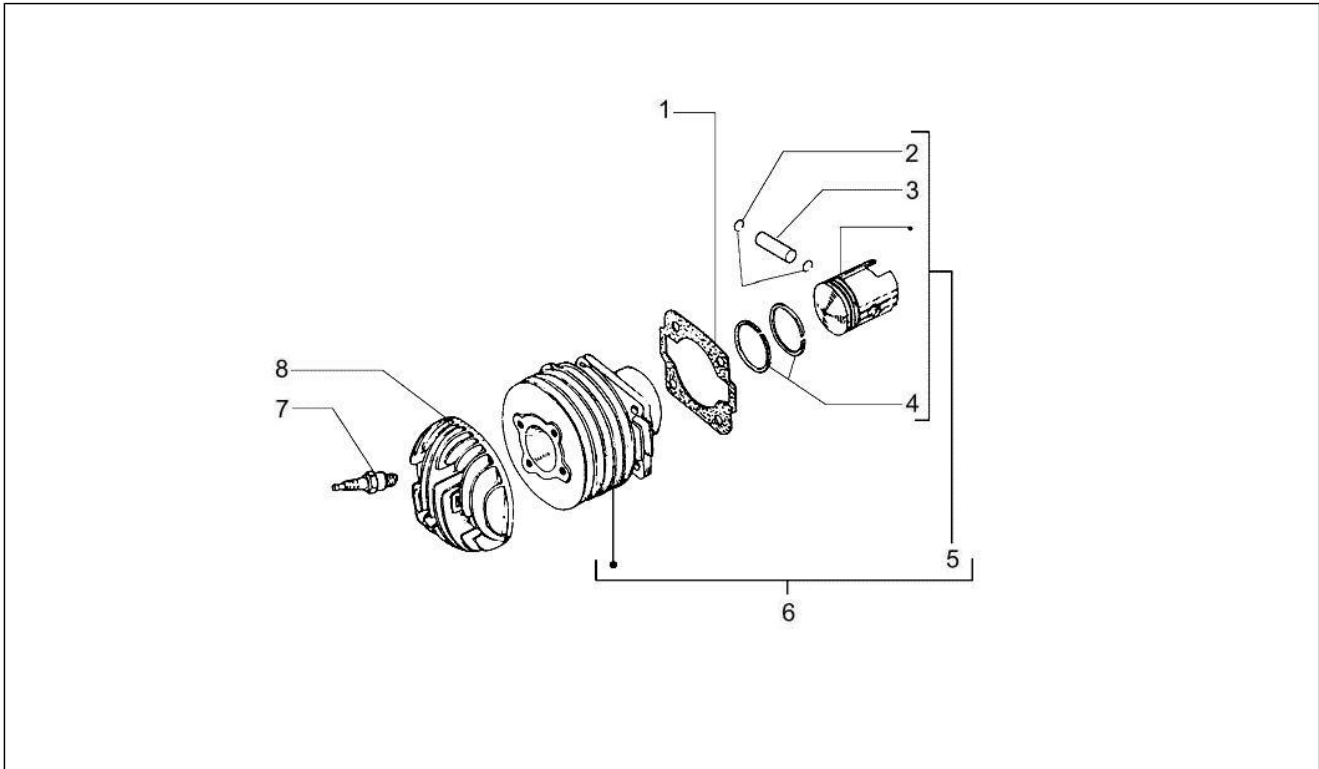
Pos.	Code	Description	Qty	Variants
28	139433	Gasket	1	
29	078521	Spring	1	
30	012485	Bolt	6	
31	020207	Nut	1	
32	023823	Screw	1	
33	020105	Nut m5	1	

Group	Engine
Code	01.06
Description	Crankshaft
Service	1



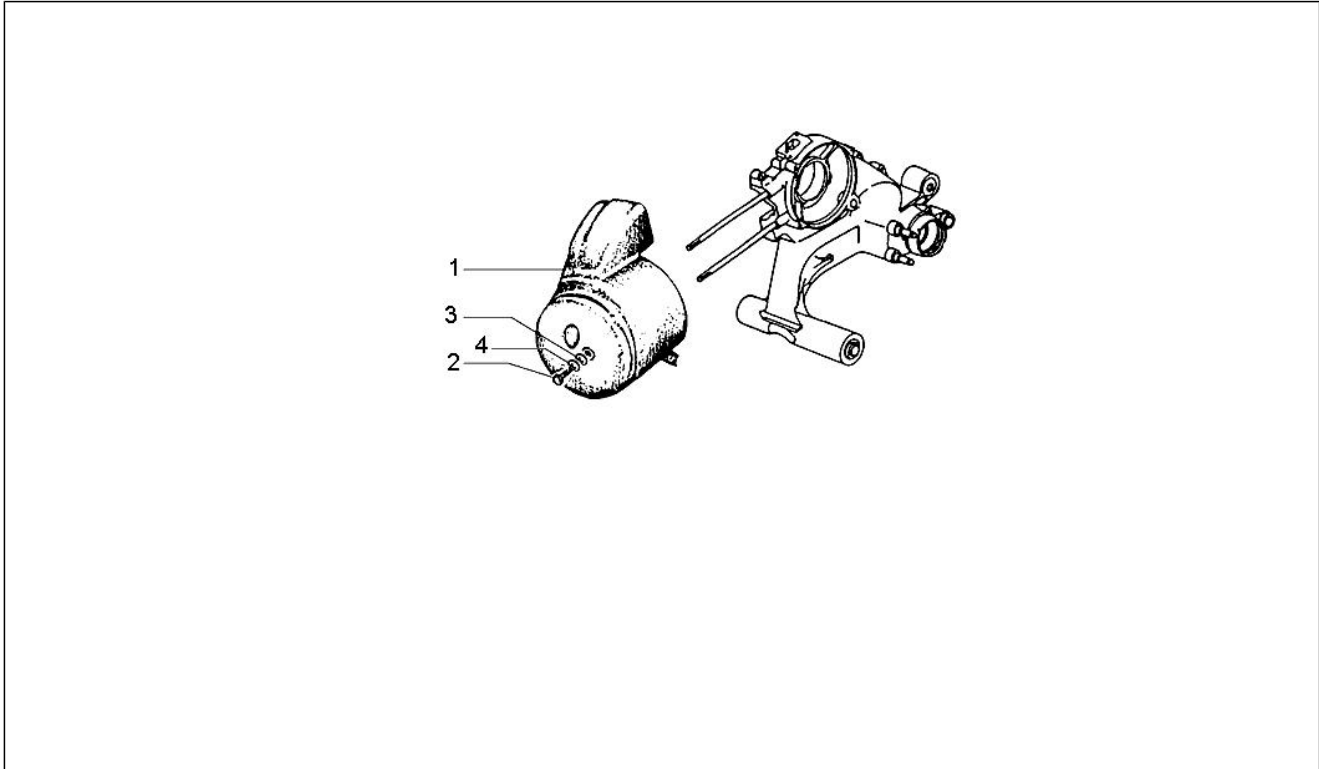
Pos.	Code	Description	Qty	Variants
1	1331545	Drive shaft	1	
3	0586524	Washer	2	
4	500541	Roller cage	1	
4	500542	Roller cage	1	
4	500543	Roller cage	1	
4	500544	Roller cage	1	
7	000097	Transmission key	1	
8	487724	Nut	1	
11	431121	Ring	1	
12	133068	Bearing	1	
13	431122	Ring	1	
14	006662	Snap ring	1	
15	097804	Bearing	1	

Group	Engine
Code	01.07
Description	Cylinder-piston-wrist pin unit
Service	1



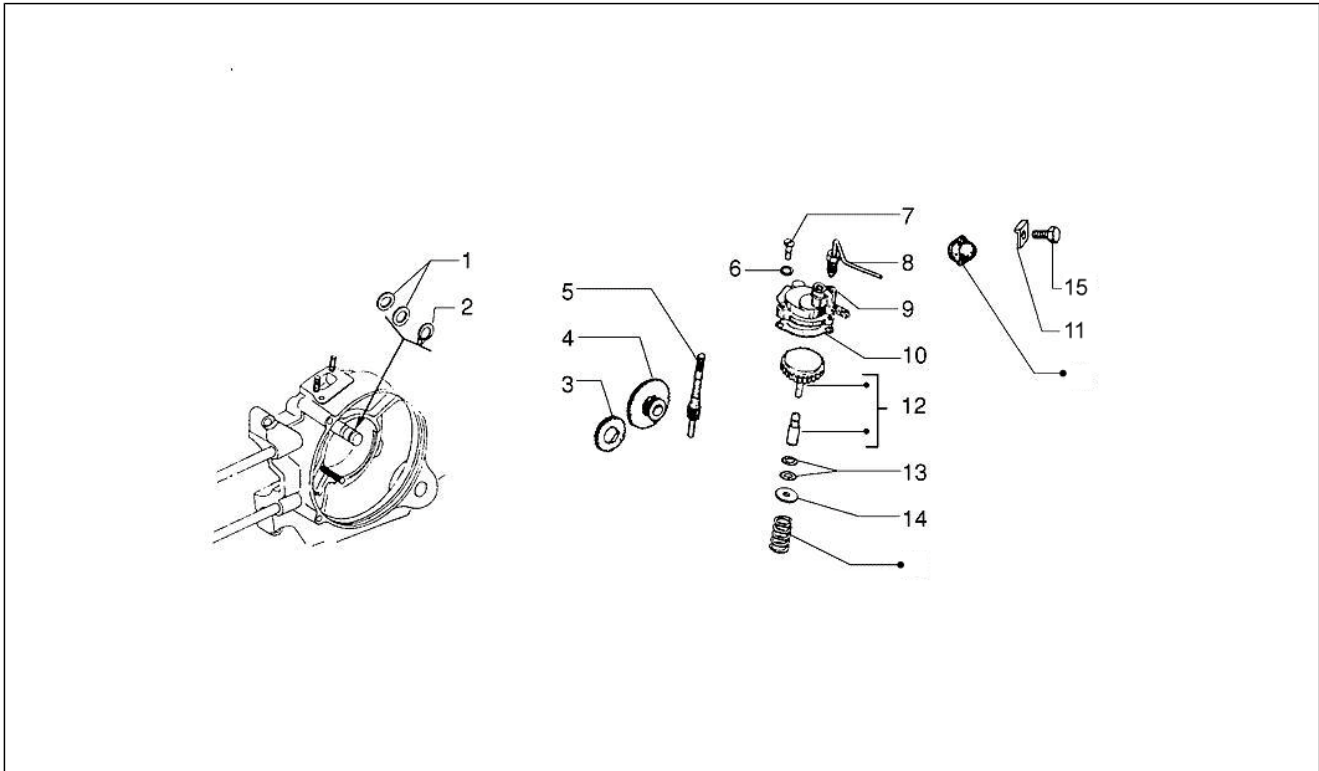
Pos.	Code	Description	Qty	Variants
1	191695	Gasket	1	
2	006615	Ring	2	
3	0519924	Piston pin	1	
4	052575	Gasket ring	1	
4	221693	Gasket ring	1	
5	1946100001	Pist.-wrist pin assy.	1	
5	1946100002	Pist.-wrist pin assy.	1	
5	1946100003	Pist.-wrist pin assy.	1	
6	840087	Cylinder-piston-wrist pin assy.	1	
7	487042	Spark plug	1	
8	0905734	Cylinder head	1	

Group	Engine
Code	01.15
Description	Crankcase cover - Crankcase cooling
Service	1



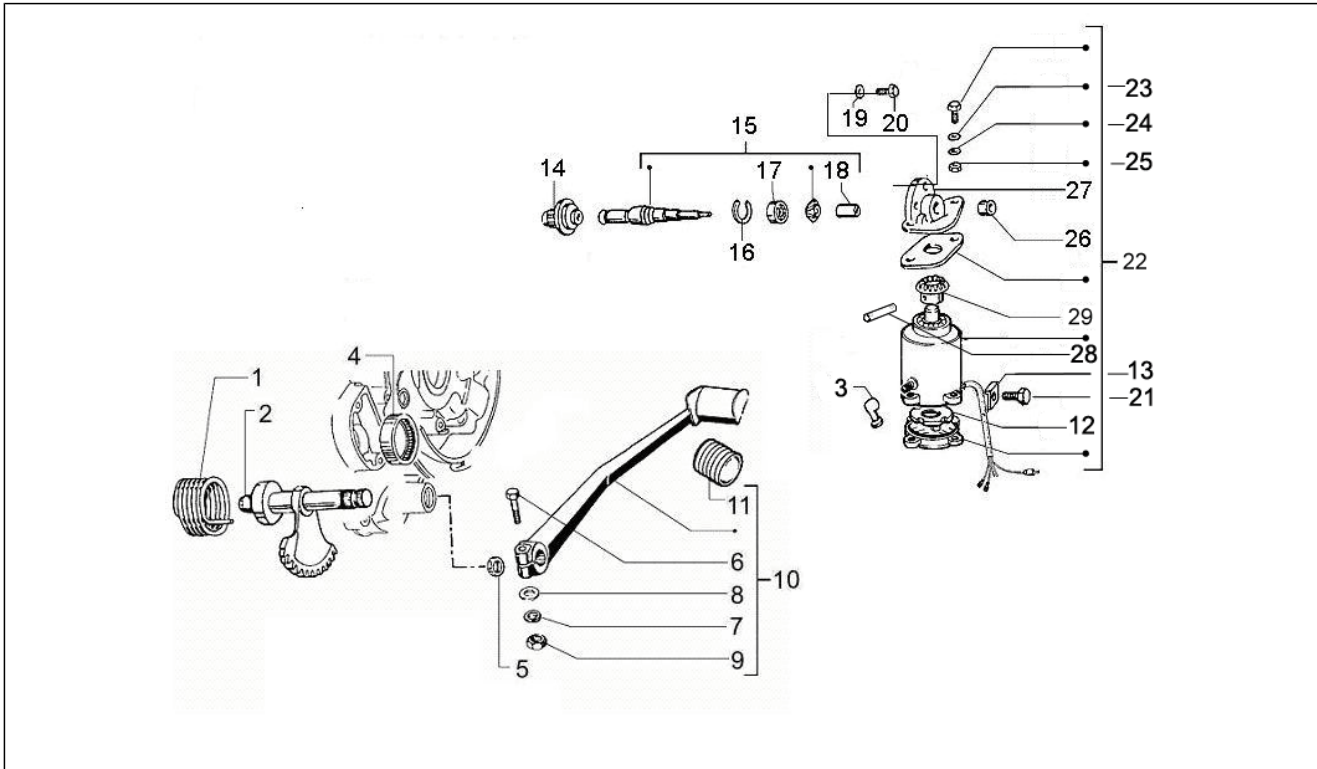
Pos.	Code	Description	Qty	Variants
1	843530	Coling hood	1	
2	015522	Screw	1	
3	006977	Washer	1	
4	078307	Washer	1	

Group	Engine
Code	01.18
Description	Oil pump
Service	1



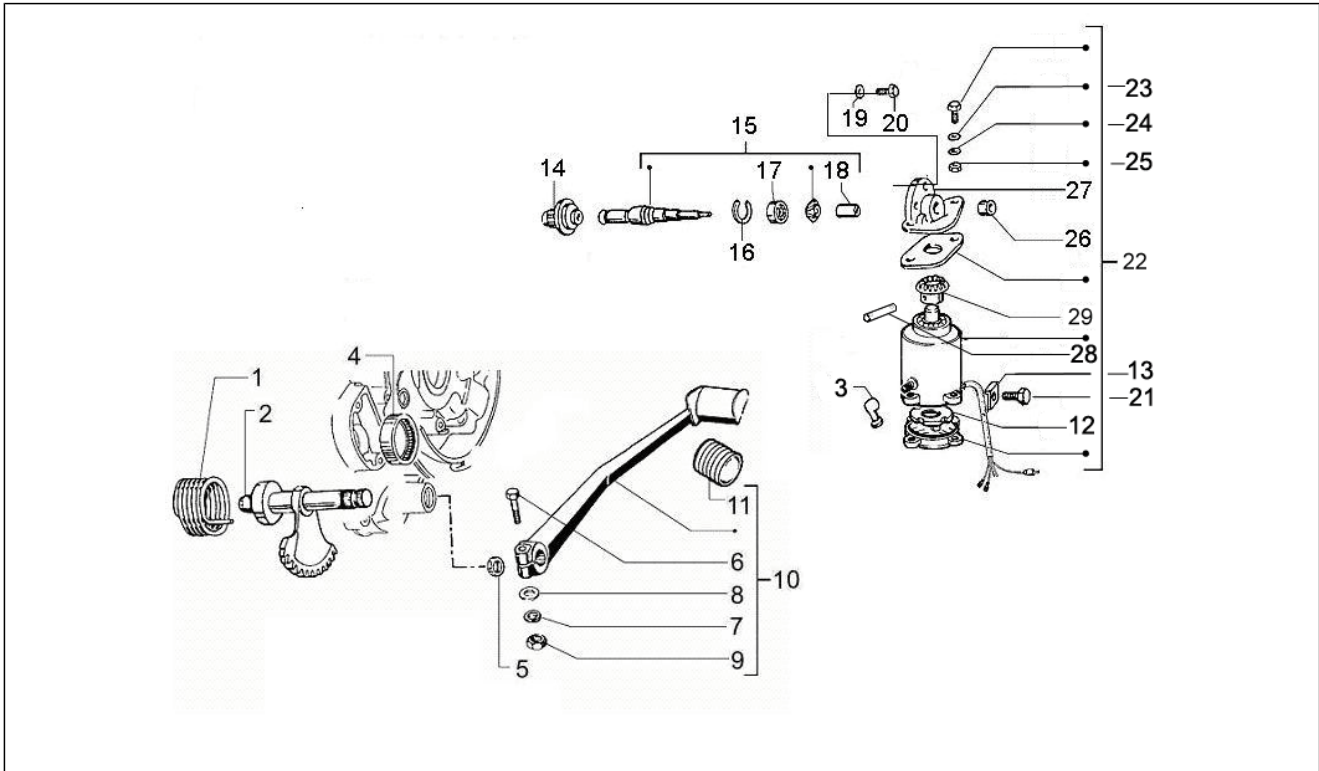
Pos.	Code	Description	Qty	Variants
1	133223	Washer	2	
2	006408	Safety washer	1	
3	287038	Gear	1	
4	236402	Intermediate gear	1	
5	287014	Pinion	1	
6	006964	Spring washer	3	
7	008339	Screw	3	
8	238873	Pipe	1	
9	2389325	Cover	1	
10	B013741	Gasket	1	
11	146087	Plate	1	
12	2216125	Pump element assy.	1	
13	006708	Gasket	2	
14	400282	Washer	1	
15	146086	Screw	1	

Group	Engine
Code	01.20
Description	Stater - Electric starter
Service	1



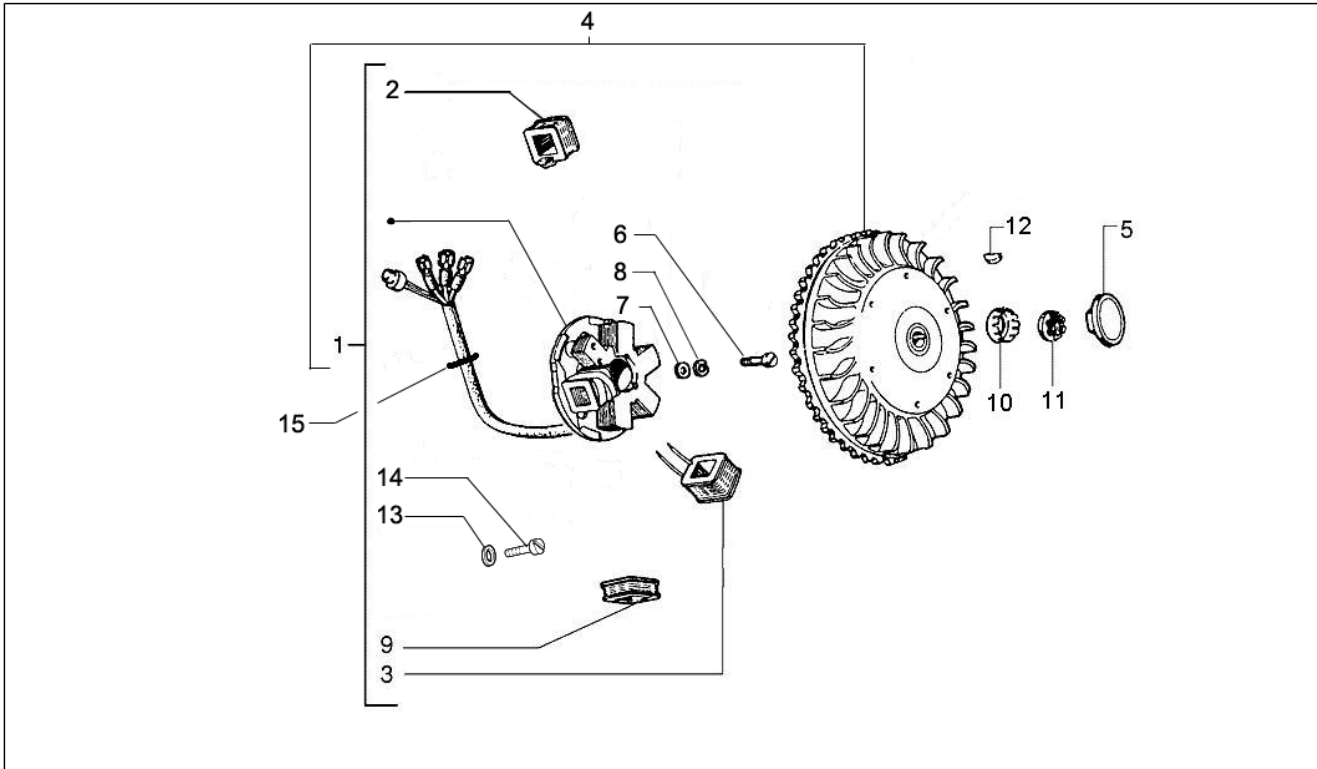
Pos.	Code	Description	Qty	Variants
1	047218	Spring	1	
2	148570	Sector	1	
3	217421	Cap	1	
4	106956	Drawn cap	1	
5	006721	Gasket	1	
6	015861	Screw	1	
7	016408	Spring washer 13,75x8,15x4,5	1	
8	003038	Flat washer 8,4x18x2	1	
9	020008	Nut M8	1	
10	1743125	Starter lever	1	
11	241004	Protection	1	
12	225564	Set of brushes	1	
13	271451	Hose clamp	1	
14	248293	Pinion	1	
15	249336	Shaft pin	1	
16	006628	Ring	1	
17	179514	Bearing	1	
18	225170	Bush	1	
19	016406	Spring washer 6,4x11,8x1	1	
20	031086	Screw m6x12	1	
21	297498	Self tapping screw M3,5x13	1	
22	249235	Starter motor	1	
23	003058	Washer 15x8,4x1,5	3	
24	016408	Spring washer 13,75x8,15x4,5	3	
25	020108	Nut M8x6,5	3	
26	179510	Drawn cap	1	
27	179516	Cage	1	
27	239851	Scatola di rinvio compl.	1	

Group	Engine
Code	01.20
Description	Stater - Electric starter
Service	1



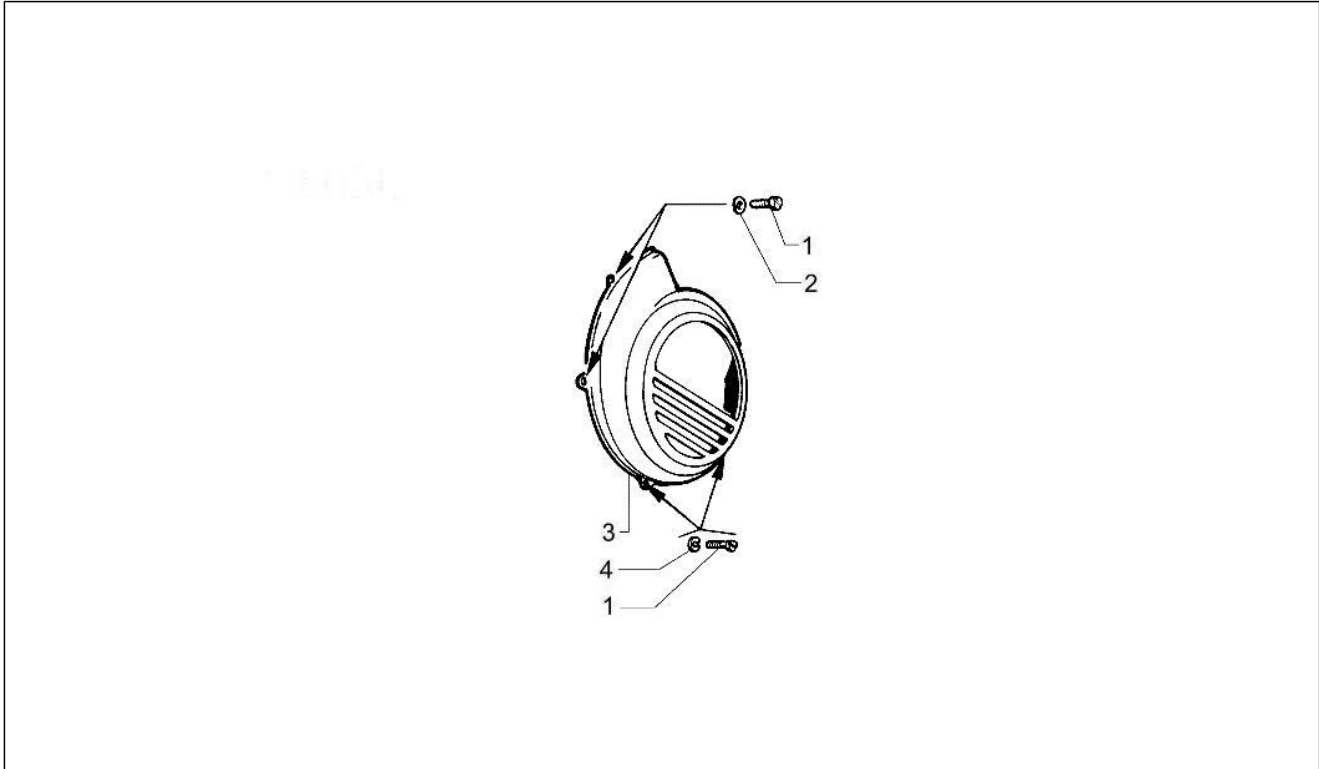
Pos.	Code	Description	Qty	Variants
28	240997	Pin	1	
29	225878	Pinion	1	

Group	Engine
Code	01.21
Description	Flywheel magneto
Service	1



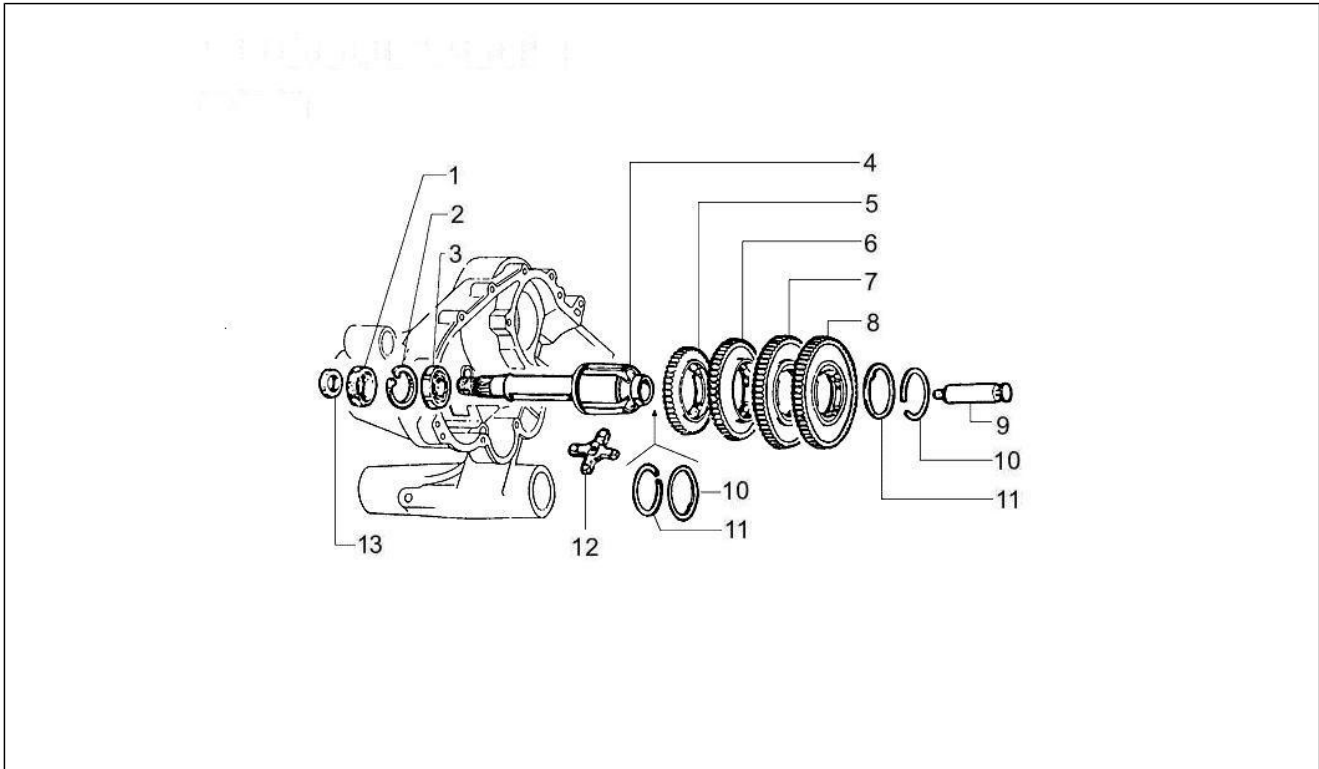
Pos.	Code	Description	Qty	Variants
1	217866	Coil support	1	
2	166657	Coil n. 1	1	
3	165791	Coil	1	
4	233765	Volano magnete completo	1	
5	166366	Plug	1	
6	015585	Self-tapping screw	3	
7	006965	Washer 5.3x10x10	3	
8	003055	Plain washer 5,4x10x0,8	3	
9	193878	Coil	1	
10	012555	Washer	1	
11	021112	Nut	1	
12	000267	Transmission key	1	
13	0030535	Washer	1	
14	015737	Screw	1	
15	145298	Fascetta a strappo	1	

Group	Engine
Code	01.23
Description	Flywheel magneto cover - Oil filter
Service	1



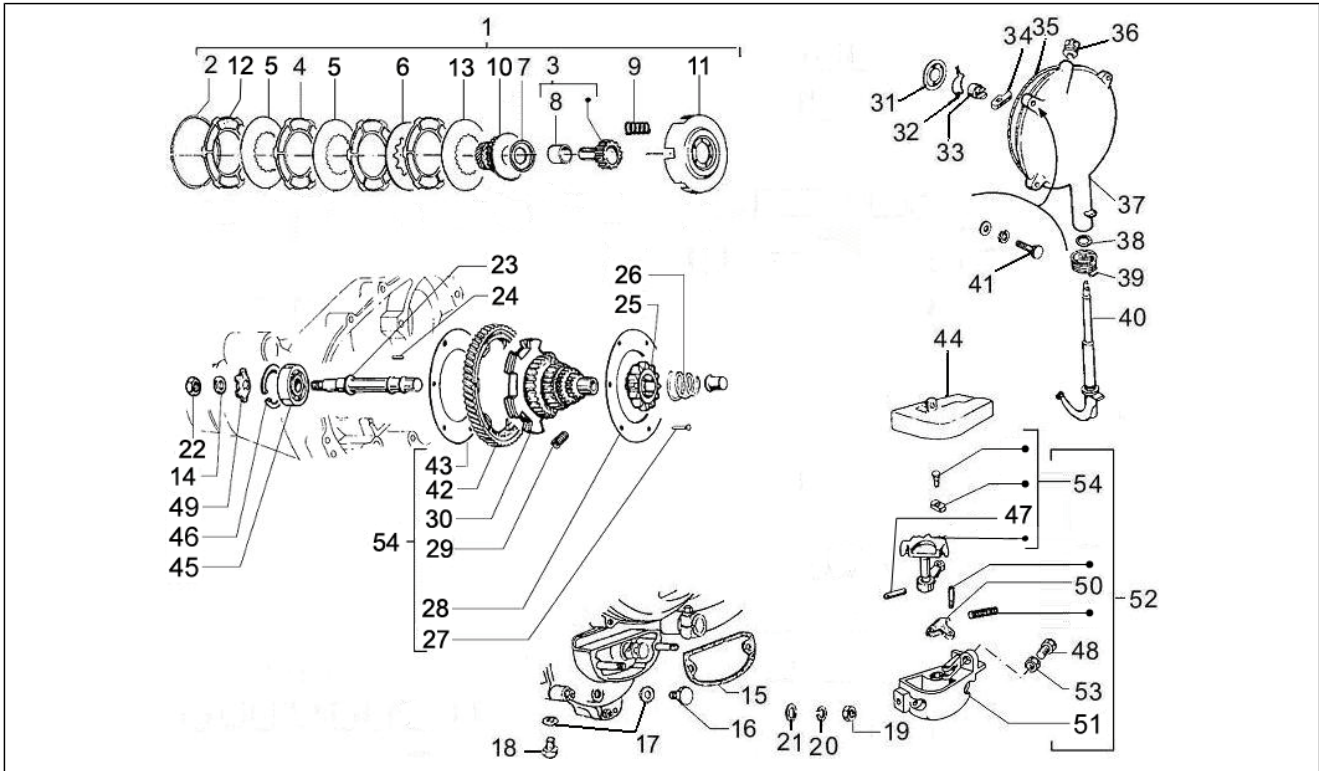
Pos.	Code	Description	Qty	Variants
1	015946	Bolt	4	
2	016406	Spring washer 6,4x11,8x1	1	
3	2856075	Fan cover	1	
4	078307	Washer	1	

Group	Engine
Code	01.28
Description	Rear transmission
Service	1



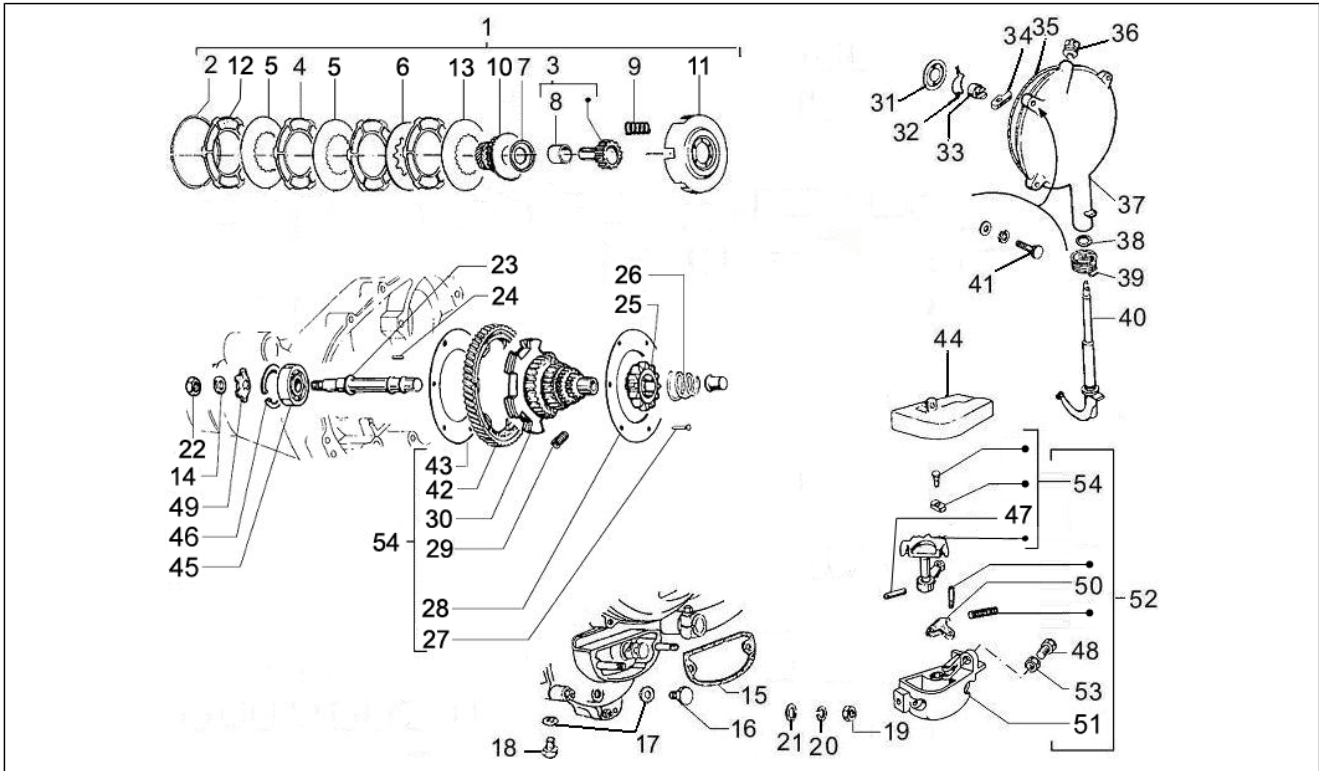
Pos.	Code	Description	Qty	Variants
1	118058	Oil seal	1	
2	006647	Circlip	1	
3	434735	Bearing 20x47x14	1	
4	2359081	Gear box shaft	1	
5	2232294	Fourth speed gear	1	
6	2232334	Third speed gear	1	
7	1528054	Second speed gear	1	
8	2232264	First speed gear	1	
9	2232324	Selector spindle	1	
10	009101	Ring	2	
11	138393	Ring	1	
12	2232255	Gear selector	1	
13	243154	Dust cover	1	

Group	Engine
Code	01.31
Description	Gear-box components
Service	1



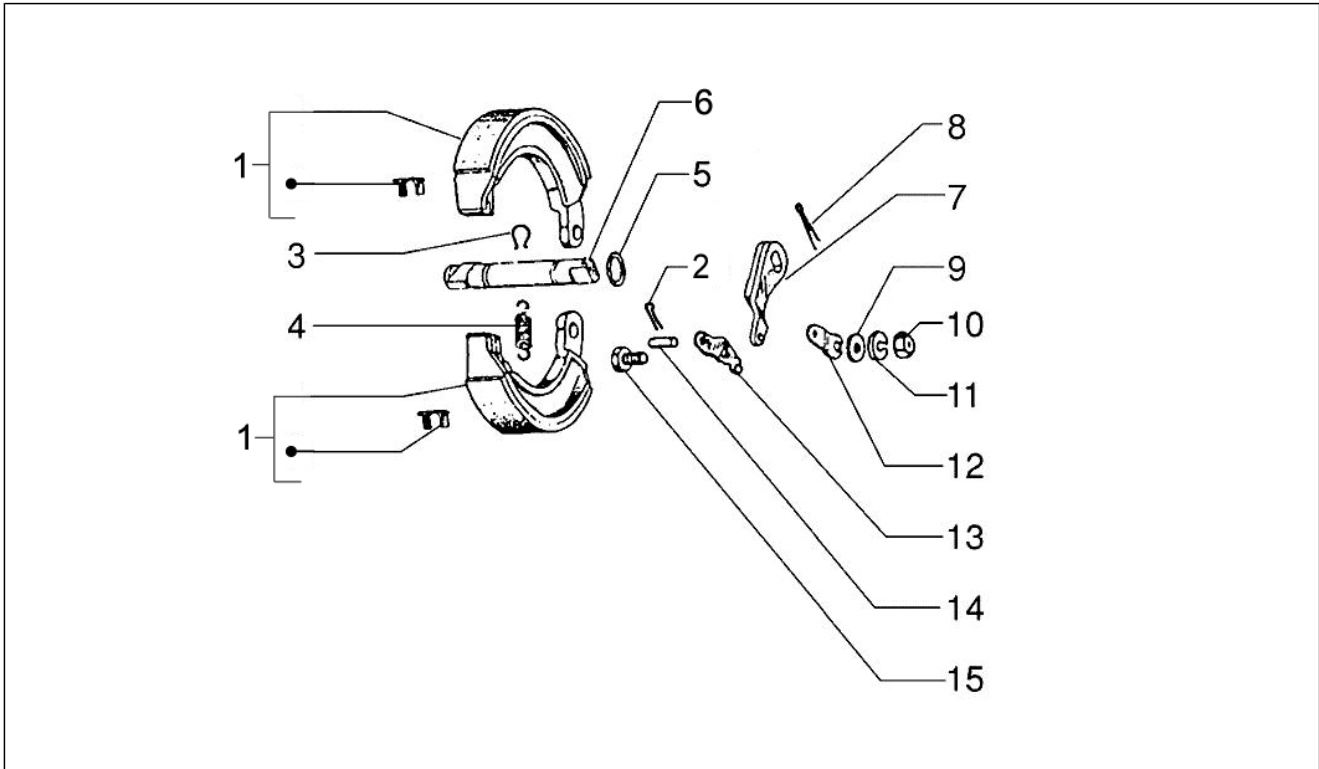
Pos.	Code	Description	Qty	Variants
1	2886506	Clutch assy	1	
2	038477	Ring	1	
3	2850795	Gear	1	
4	237267	Driving clutch disc	3	
5	286782	Disc	2	
6	237271	Disc	1	
7	235615	Washer	1	
8	0593652	Bush	1	
9	289607	Spring	8	
10	2868994	Drive gear	1	
11	845498	Clutch housing	1	
12	237268	Driving clutch disc	1	
13	237272	Disc	1	
14	016612	Spring washer	1	
15	8013738	Guarnizione carter-supp. cambio	1	
16	030280	Screw	1	
17	000397	Gasket	2	
18	138345	Oil plug	1	
19	020107	Nut	2	
20	016407	Washer	2	
21	003057	Washer	2	
22	015231	Nut	1	
23	1745151	Pin	1	
24	002457	Roller	21	
25	1135264	Starting gear	1	
26	139100	Spring	1	
27	005765	Rivet	6	
28	07737101	Ring	1	

Group	Engine
Code	01.31
Description	Gear-box components
Service	1



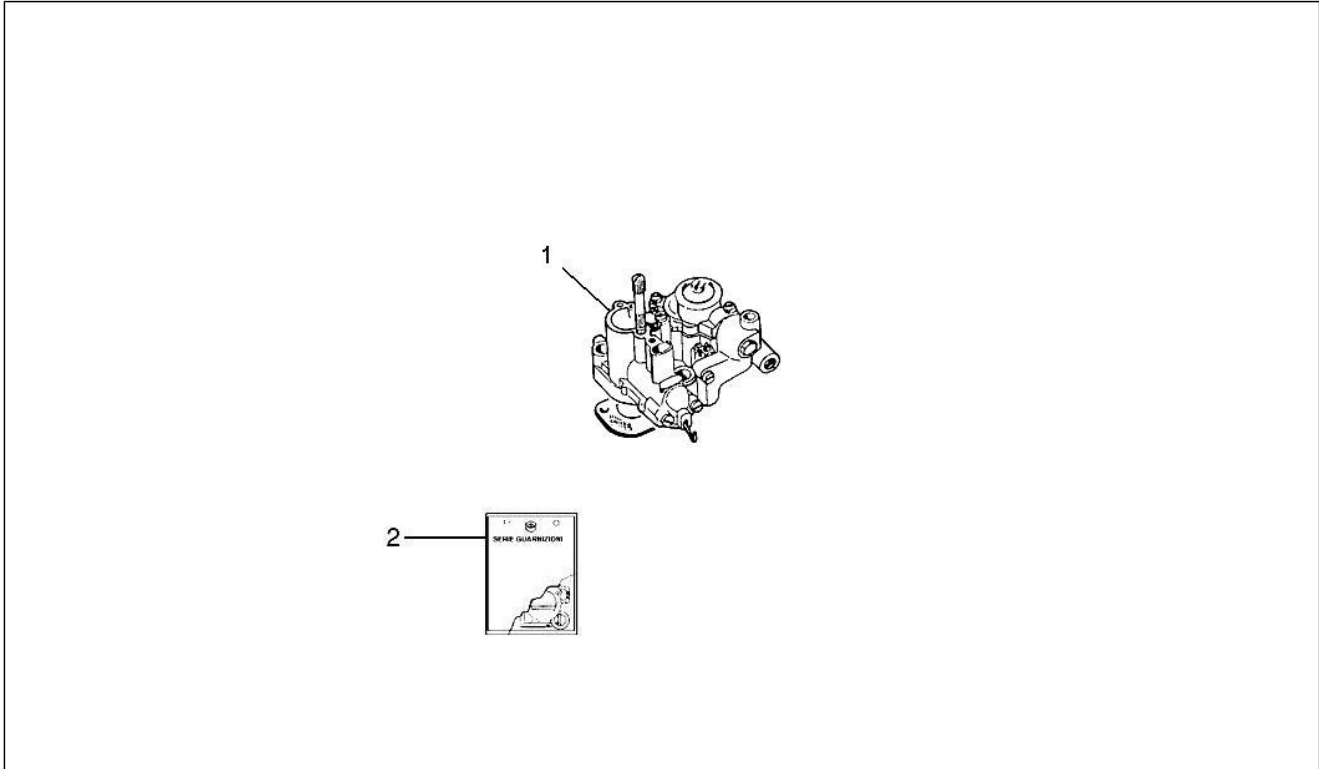
Pos.	Code	Description	Qty	Variants
29	078853	Spring	6	
30	2362224	Multiple gear teeth	1	
31	215809	Disc	1	
32	014457	Ring	1	
33	0898582	Pin	1	
34	083806	Lever	1	
35	017781	Gasket	1	
36	0193014	Breather	1	
37	1139954	Clutch cover	1	
38	006708	Gasket	1	
39	046740	Spring	1	
40	0979844	Lever	1	
41	018639	Hex screw M6x20	3	
42	1748254	Ring gear	1	
43	07737001	Ring	1	
44	138865	Cover	1	
45	030209	Ball bearing	1	
46	006642	Circlip	1	
47	013010	Pin	1	
48	090527	Screw	1	
49	016305	Washer	1	
50	285452	Staffa p.rullo compl.	1	
51	2854751	Supporto	1	
52	196585	Supporto comando cambio completo	1	
53	020105	Nut m5	1	
54	174735A	Spring gear	1	
54	1965846	Sector	1	

Group	Engine
Code	01.35
Description	Rear brake - Brake jaw
Service	1



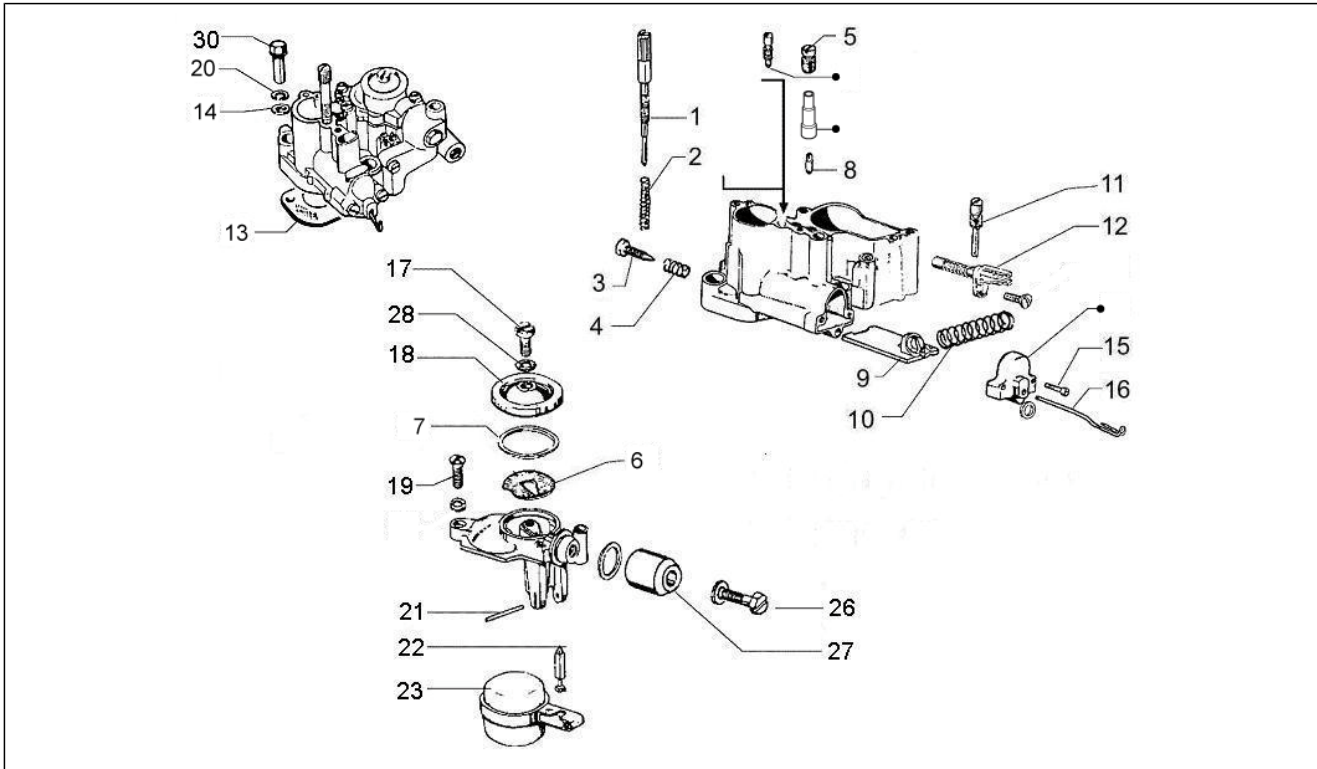
Pos.	Code	Description	Qty	Variants
1	4144504	Rear brake jaws	1	
2	012761	Split pin	1	
3	000061	Ring	2	
4	078522	Spring	1	
5	006714	O-ring	2	
6	0971815	Shaft	1	
7	1001014	Lever	1	
8	003208	Split pin	1	
9	012539	Washer	1	
10	015317	Nut	1	
11	013940	Washer	1	
12	042047	Plate	1	
13	094779	Plate	1	
14	090306	Pin	1	
15	015510	Bolt	1	

Group	Engine
Code	01.39
Description	Carburettor, assembly - Union pipe
Service	1



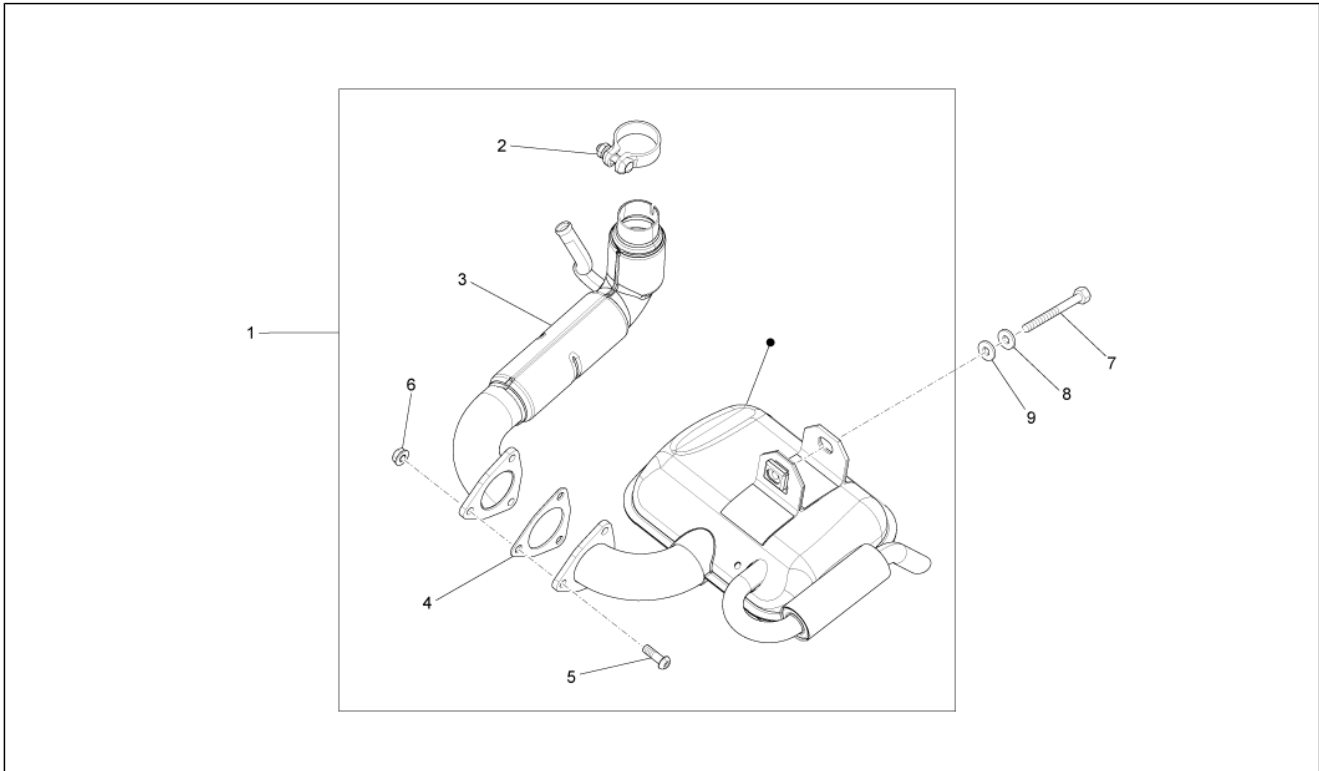
Pos.	Code	Description	Qty	Variants
1	239178	Carburettor	1	
2	154792	Gaskets set	1	

Group	Engine
Code	01.40
Description	Carburetor's components
Service	1



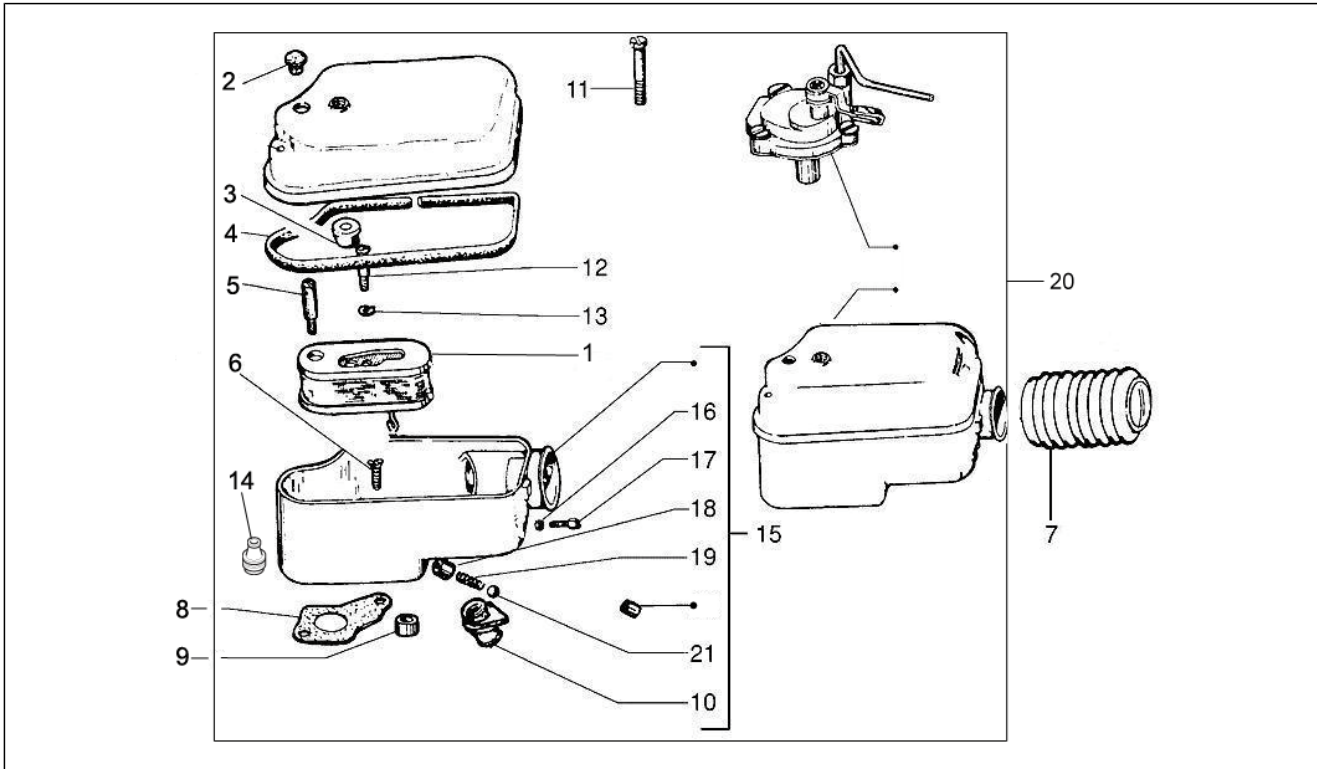
Pos.	Code	Description	Qty	Variants
1	085299	Screw	1	
2	026018	Spring	1	
3	239089	Screw	1	
4	085285	Spring	1	
5	193870	Air vent	1	
6	082931	Fuel filter	1	
7	154754	Oil seal and gask. set	1	
8	086947	Main jet	1	
9	198970	Gas valve	1	
10	085304	Spring	1	
11	092712	Starter jet	1	
12	241089	Starter unit	1	
13	B013740	Gasket	1	
14	013762	Washer	2	
15	018572	Bolt	2	
16	113010	Tie rod	1	
17	AP8222645	Cap fixing screw	1	
18	082933	Plug	1	
19	092395	Screw	1	
20	016409	Washer	2	
21	085291	Pin	1	
22	247652	Jet Needle	1	
23	085293	Float	1	
26	AP8106795	Cap fixing screw	1	
27	085295	Sparkplug cap	1	
28	242277	Gasket	1	
30	239265	Screw	2	

Group	Engine
Code	01.42
Description	Silencer
Service	1



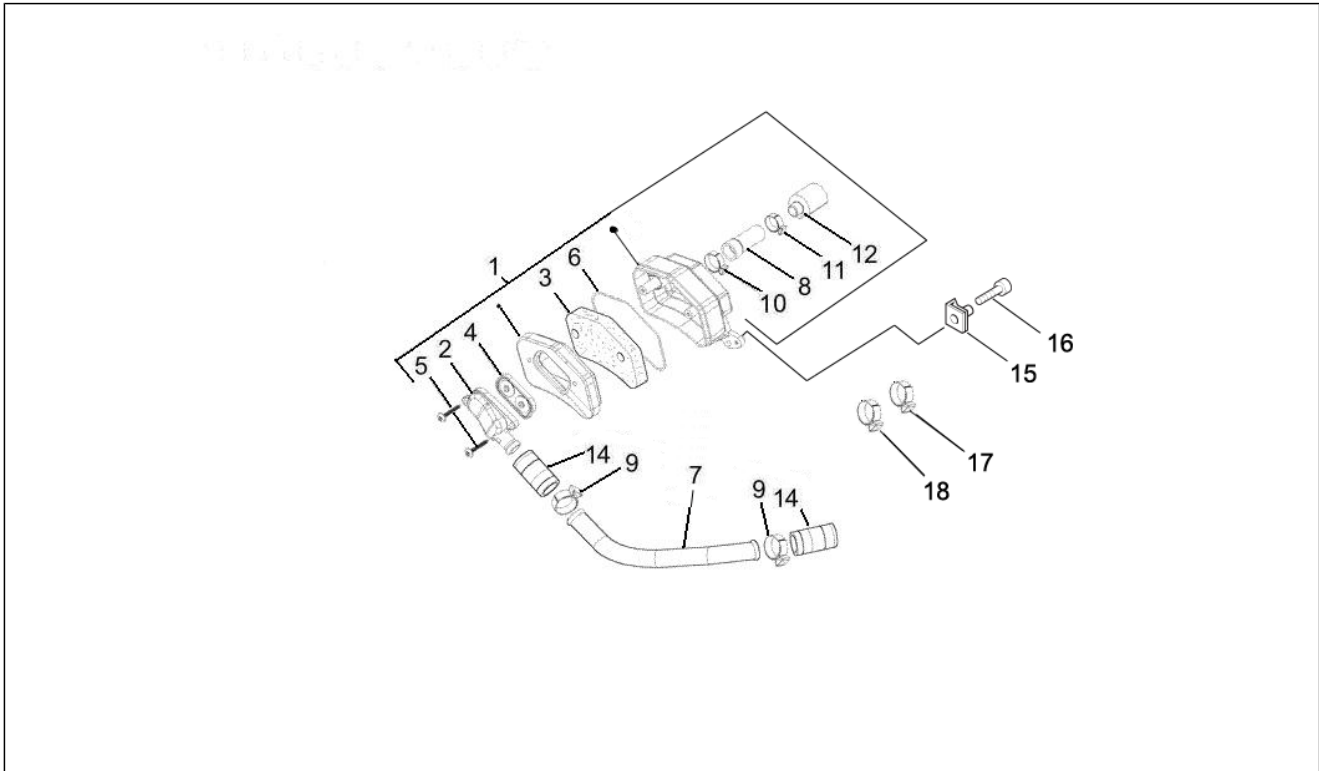
Pos.	Code	Description	Qty	Variants
1	B0146325	Silencer	1	
2	130291	Hose clamp	1	
3	B014633	Exhaust pipe	1	
4	B014635	Gasket	1	
5	564606	Hex socket screw	3	
6	015341	Flanged nut	3	
7	014691	Bolt	1	
8	016410	Washer 17,6x11x2,5	1	
9	178790	Flat washer 22x10,3x2,5	1	

Group	Engine
Code	01.45
Description	Air filter
Service	1



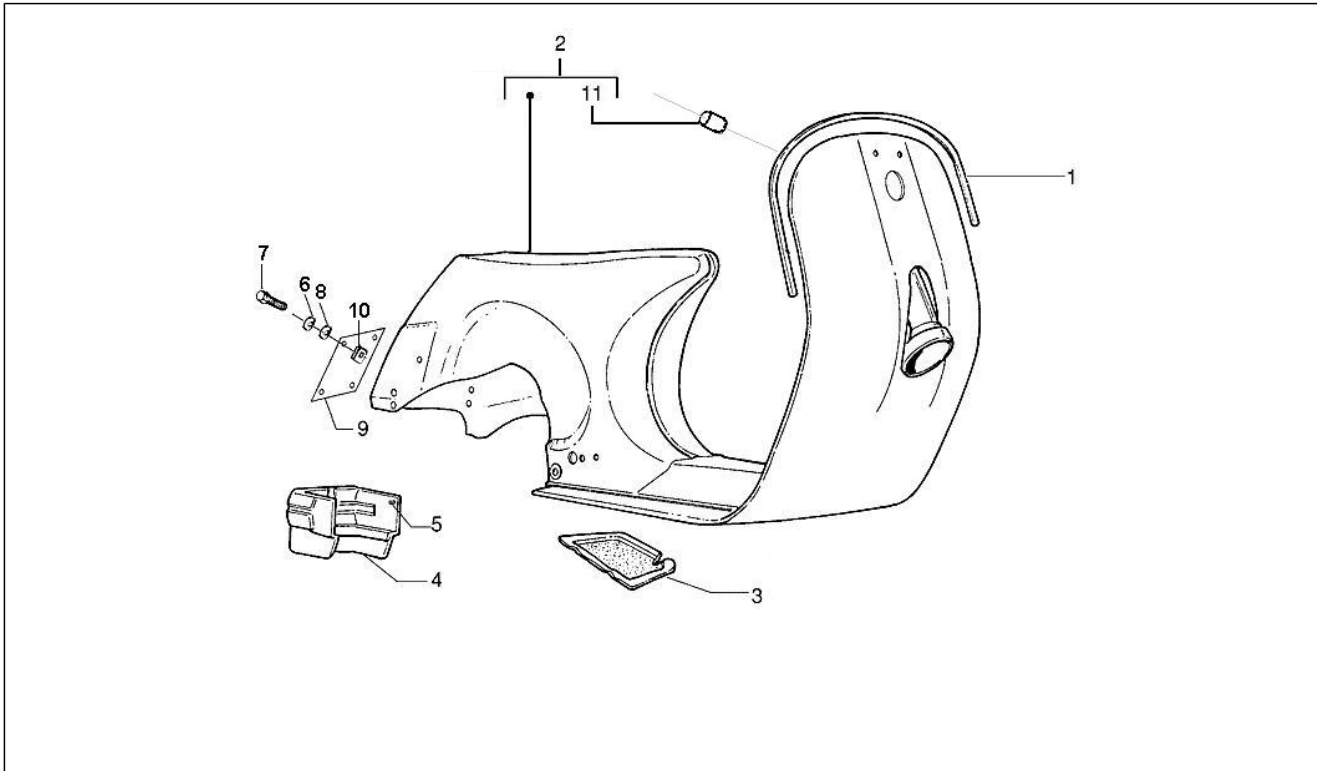
Pos.	Code	Description	Qty	Variants
1	247556	Scatola filtro completa	1	
2	087975	Plug	1	
3	058364	Gasket	1	
4	239049	Gasket	1	
5	014743	Screw	1	
6	030262	Screw	1	
7	227205	Bellows	1	
8	B013739	Gasket	1	
9	133238	Locating dowel	1	
10	113060	Fairlead	1	
11	235747	Screw	2	
12	828493	Screw	1	
13	016405	Spring washer	1	
14	239017	Fairlead	1	
15	2391685	Air.cl.case	1	
16	002613	Nut	1	
17	002612	Adjuster	1	
18	133578	Bush	1	
19	113291	Spring	1	
20	B0141205	Air cleaner	1	
21	014246	Ball	1	

Group	Engine
Code	01.46
Description	Secondary air box
Service	1



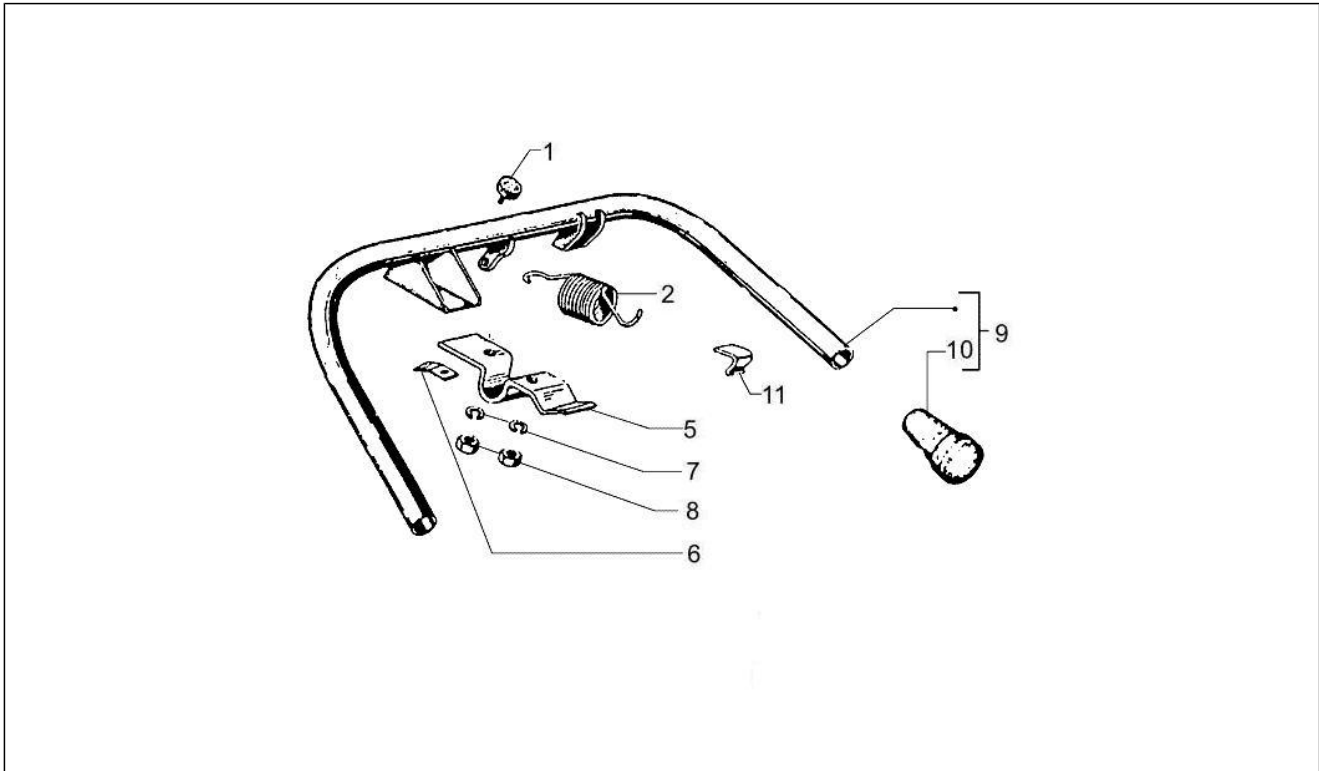
Pos.	Code	Description	Qty	Variants
1	8439575	Air cleaner case	1	
2	827209	Cover sas	1	
3	486942	Filter sas	1	
4	82758R	Diaphragm	1	
5	478533	Self-tap screw	2	
6	486943	Gasket	1	
7	844165	Pipe	1	
8	843714	Pipe	1	
9	827444	Hose clamp	2	
10	CM001905	Hose clamp	1	
11	CM001904	Hose clamp	1	
12	832620	Filter plug	1	
14	827443	Hose	2	
15	248419	Spring plate	1	
16	259151	Screw	1	
17	564014	Hose clamp	1	
18	827444	Hose clamp	2	

Group	Frame - Plastic parts - Coachwork
Code	02.01
Description	Frame/bodywork
Service	1



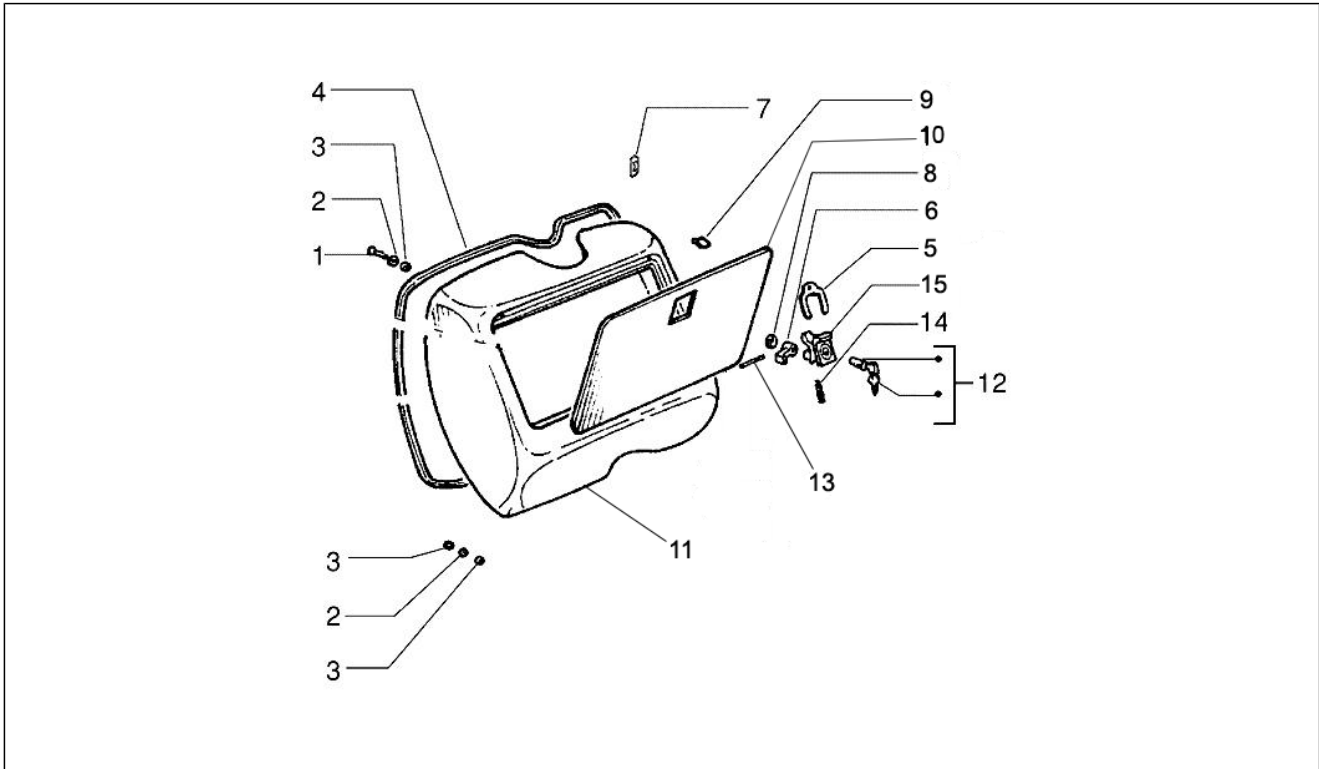
Pos.	Code	Description	Qty	Variants
1	574682	Beading	1	
2	57725201	Scocca con P.I. cataforesi	1	
3	242092	Frame seal diaph.	1	
4	5769690090	Rear protection	1	
5	181475	Plate	2	
6	003054	Washer 4,3x8x0,5	4	
7	015996	Screw M4x12	4	
8	016404	Flat washer 4,2x7,6x0,9	4	
9	5832096	Number plate holder	1	
10	020104	Nut M4	4	
11	259420	Lock body	1	

Group	Frame - Plastic parts - Coachwork
Code	02.25
Description	Stand/s
Service	1



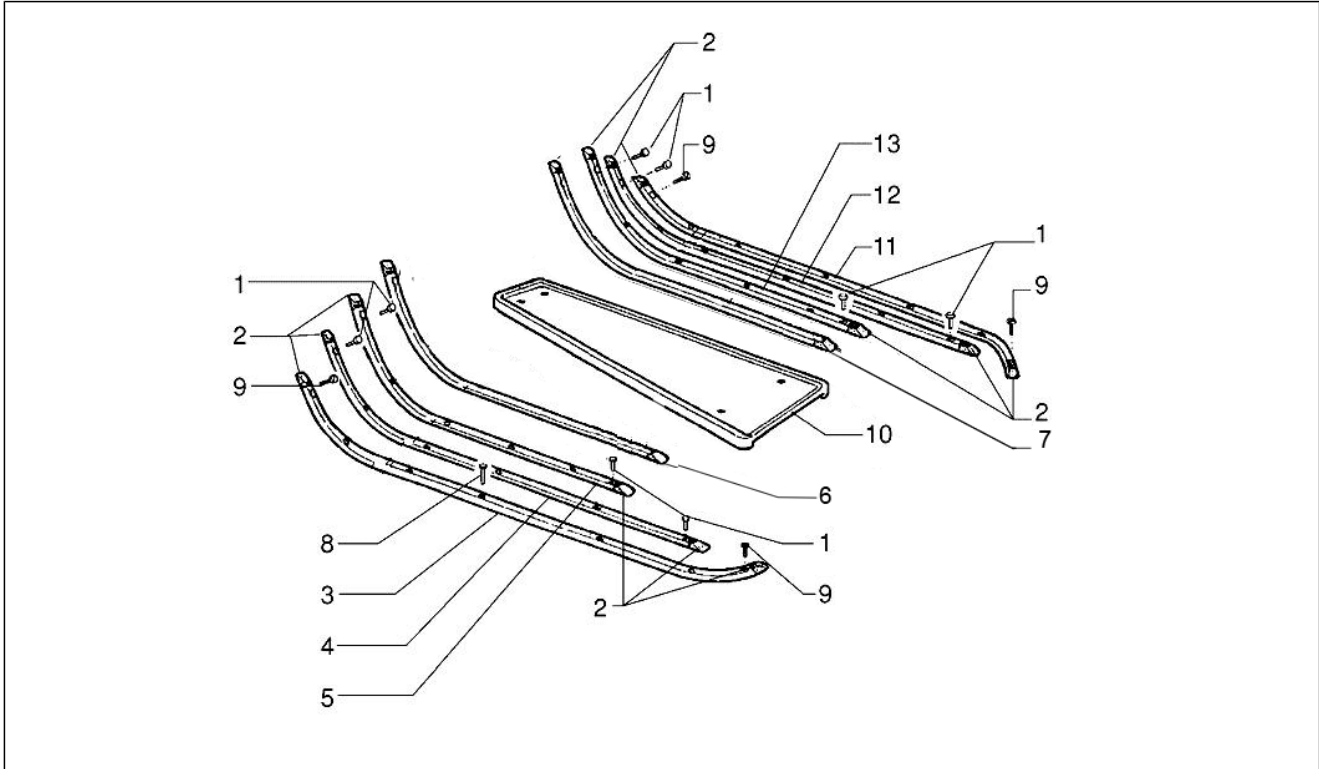
Pos.	Code	Description	Qty	Variants
1	174773	Drift	1	
2	176444	Spring	2	
5	176168	Bracket	1	
5	258733	Bracket	1	
6	258555	Plate	2	
7	016406	Spring washer 6,4x11,8x1	4	
8	219277	Nut	4	
9	1761606	Central stand	1	
10	176166	Stand pad	2	
11	077252	Plate	2	

Group	Frame - Plastic parts - Coachwork
Code	02.30
Description	Front glove-box - Knee-guard panel
Service	1



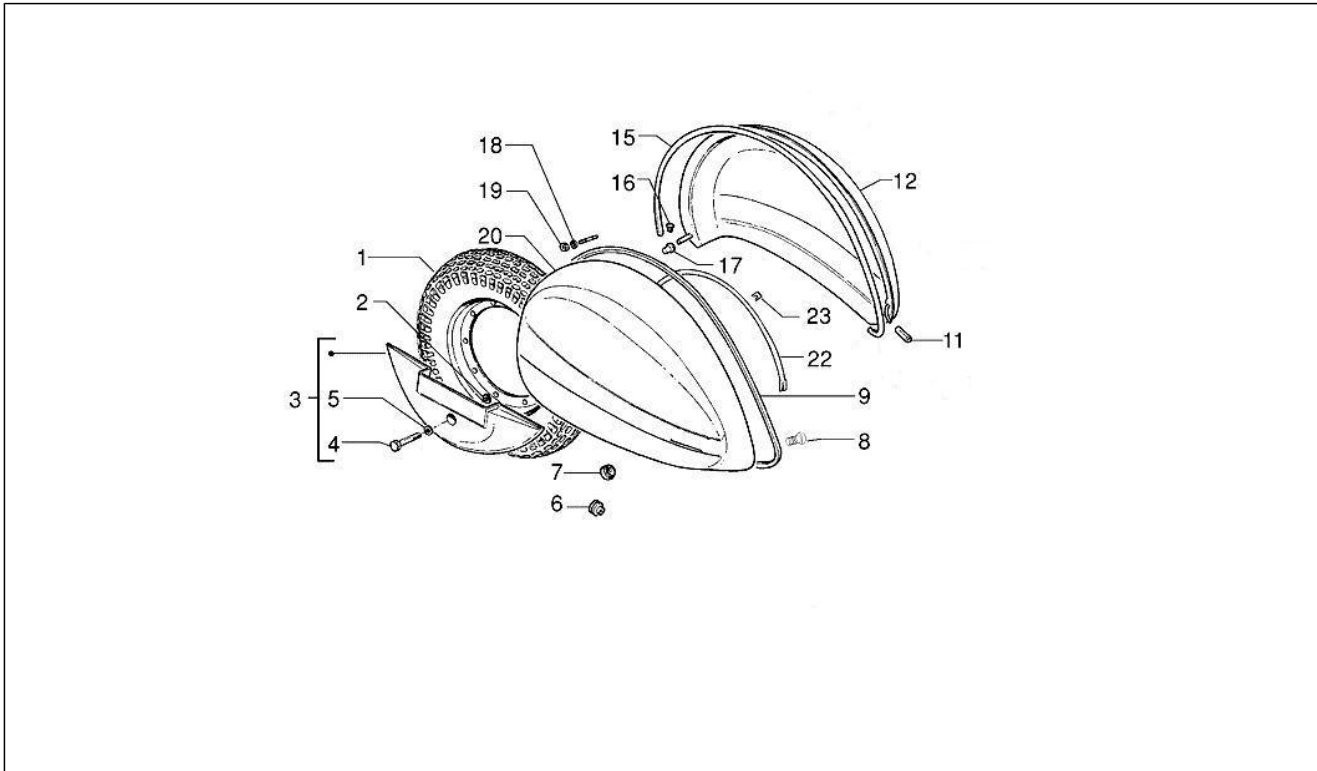
Pos.	Code	Description	Qty	Variants
1	014726	Screw m5	4	
2	012528	Washer	4	
3	020105	Nut m5	12	
4	623327	Top box weatherseal	1	
5	073260	Plate	1	
6	672942	Lever	1	
7	577594	Spring clamp	2	
8	672943	Spring washer	1	
9	149908	Drift	4	
10	673231	Not available	1	
11	6732305	Front glove comp.	1	
12	179292	Cylinder set	1	
13	097523	Pin	2	
14	073111	Spring	1	
15	576998	Lock,assy	1	

Group	Frame - Plastic parts - Coachwork
Code	02.31
Description	Central cover - Footrests
Service	1



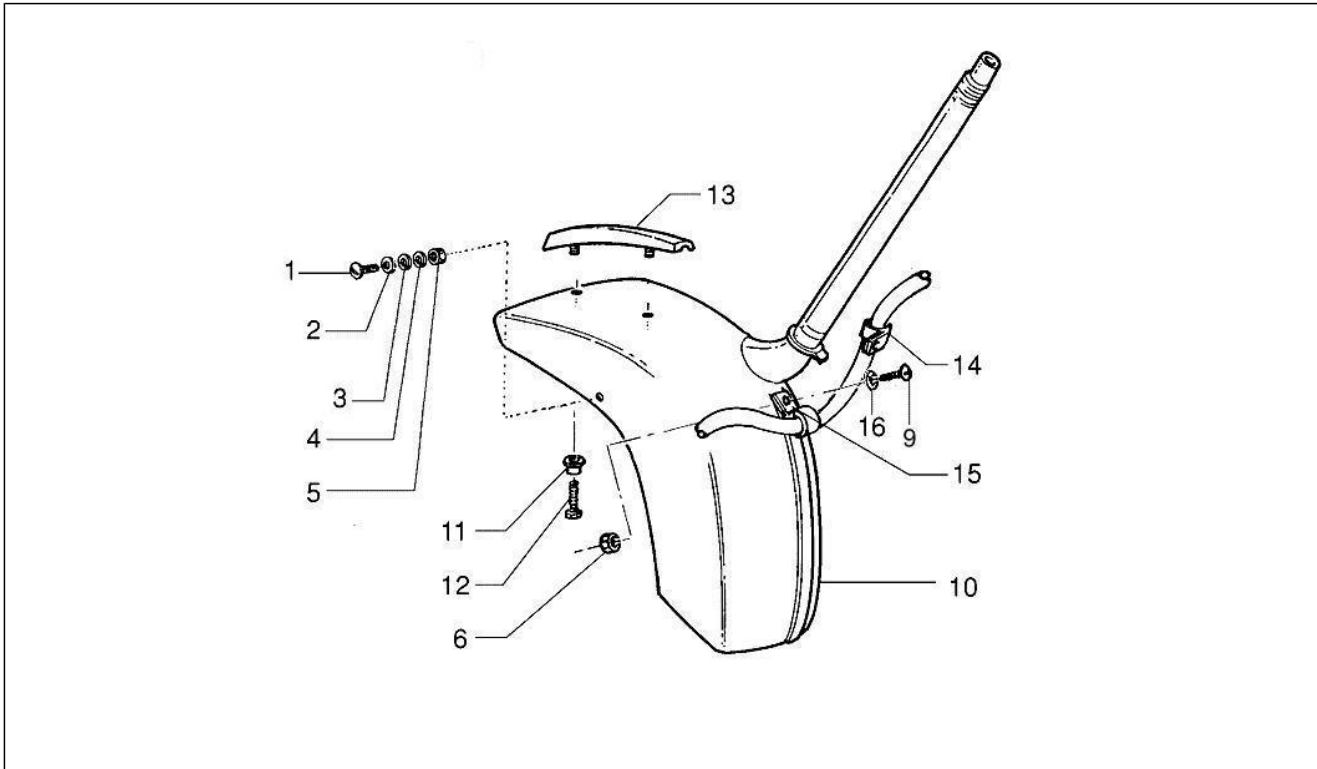
Pos.	Code	Description	Qty	Variants
1	182144	Rivet	8	
2	182174	Terminal	12	
3	1797764	Lh stripe	1	
4	179778	Packing	1	
5	179780	Packing	1	
6	673199	Lh weather strip	1	
7	673200	Rh weather strip	1	
8	258826	Rivet	26	
9	182302	Rivet	4	
10	6732010090	Footrest	1	
11	1797754	Rh stripe	1	
12	179777	Packing	1	
13	179779	Packing	1	

Group	Frame - Plastic parts - Coachwork
Code	02.32
Description	Side cover - Spoiler
Service	1



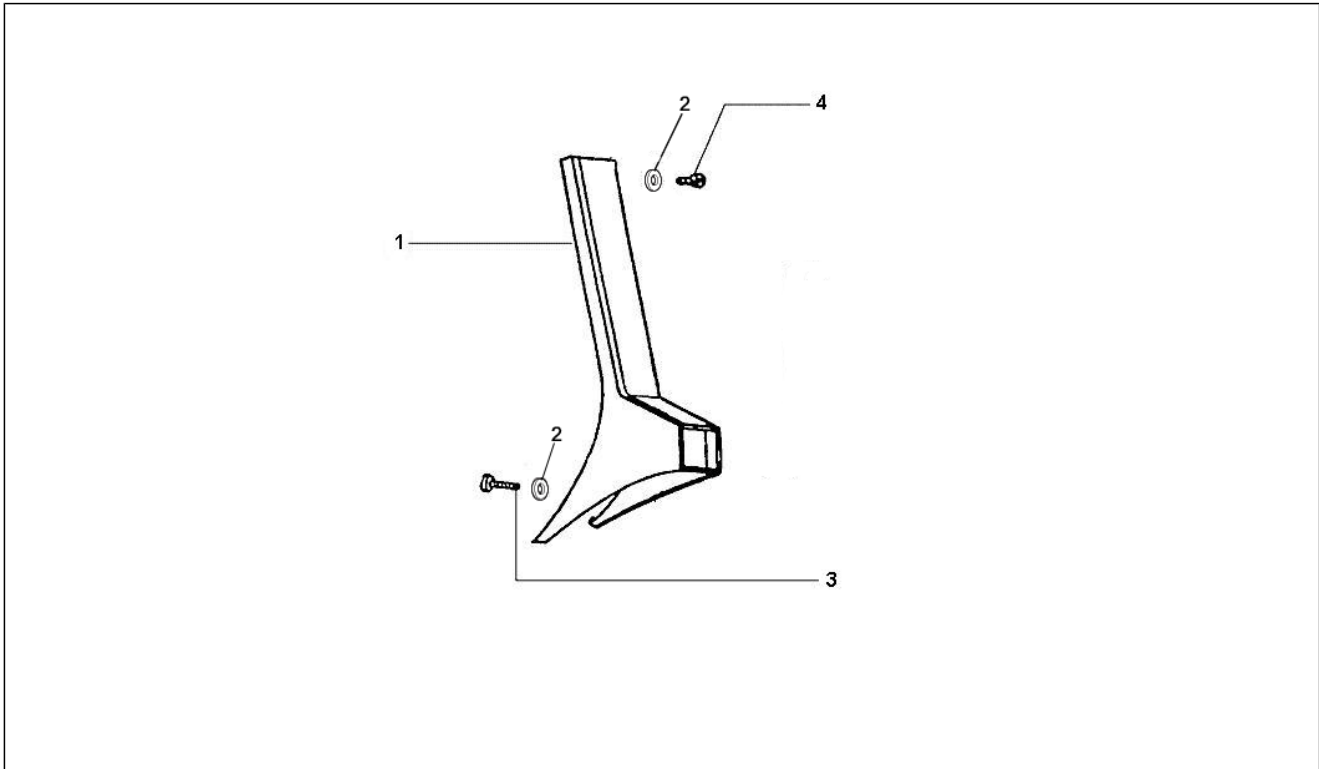
Pos.	Code	Description	Qty	Variants
1	597452	Wheel	1	
2	056649	Washer	1	
3	226823	Wheel cover	1	
4	159873	Bolt	1	
5	006968	Washer	1	
6	070286	Fairlead	1	
7	156946	Fairlead	1	
8	018074	Screw	1	
9	244095	Packing	1	
11	024041	Pipe	1	
12	5775136	Front fairing	1	
15	227273	Packing	1	
16	195087	Drift	2	
17	216053	Bush	2	
18	016408	Spring washer 13,75x8,15x4,5	2	
19	020108	Nut M8x6,5	2	
20	5758016	Front fairing	1	
22	241559	Wire	1	
23	241167	Spring	7	

Group	Frame - Plastic parts - Coachwork
Code	02.33
Description	Wheel huosing - Mudguard
Service	1



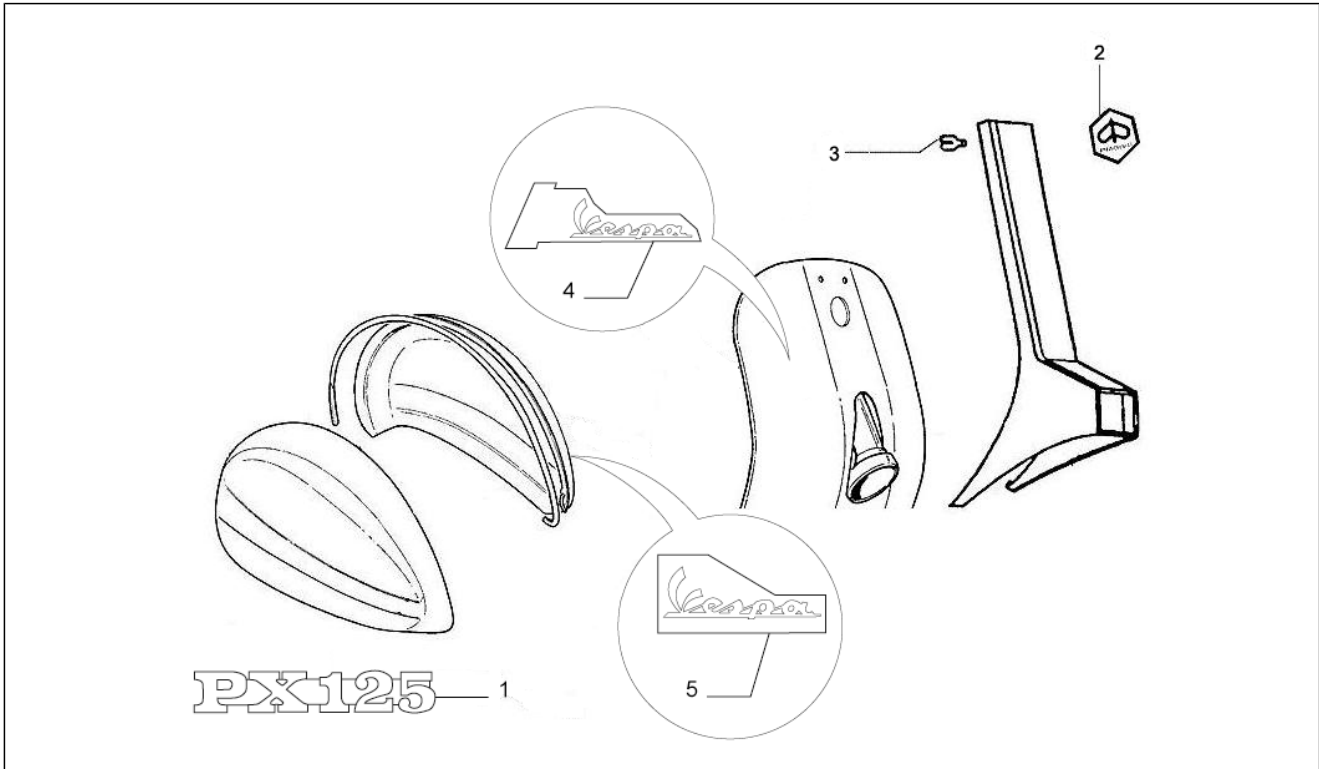
Pos.	Code	Description	Qty	Variants
1	014467	Vite fissaggio parafango	1	
2	006018	Washer	1	
3	097733	Flat washer 5,3x14x1	1	
4	012528	Washer	1	
5	020105	Nut m5	1	
6	288245	Self locking nut	3	
9	259830	Screw m6x22	3	
10	5638116	Front mudguard	1	
11	192598	Cap	2	
12	015727	Self tapping screw	2	
13	564219	Crest	1	
14	217280	Hose clamp	1	
15	573918	Hose clamp	1	
16	013880	Flat washer 16x6,5x1,5	2	

Group	Frame - Plastic parts - Coachwork
Code	02.36
Description	Front covers - Mudflaps
Service	1



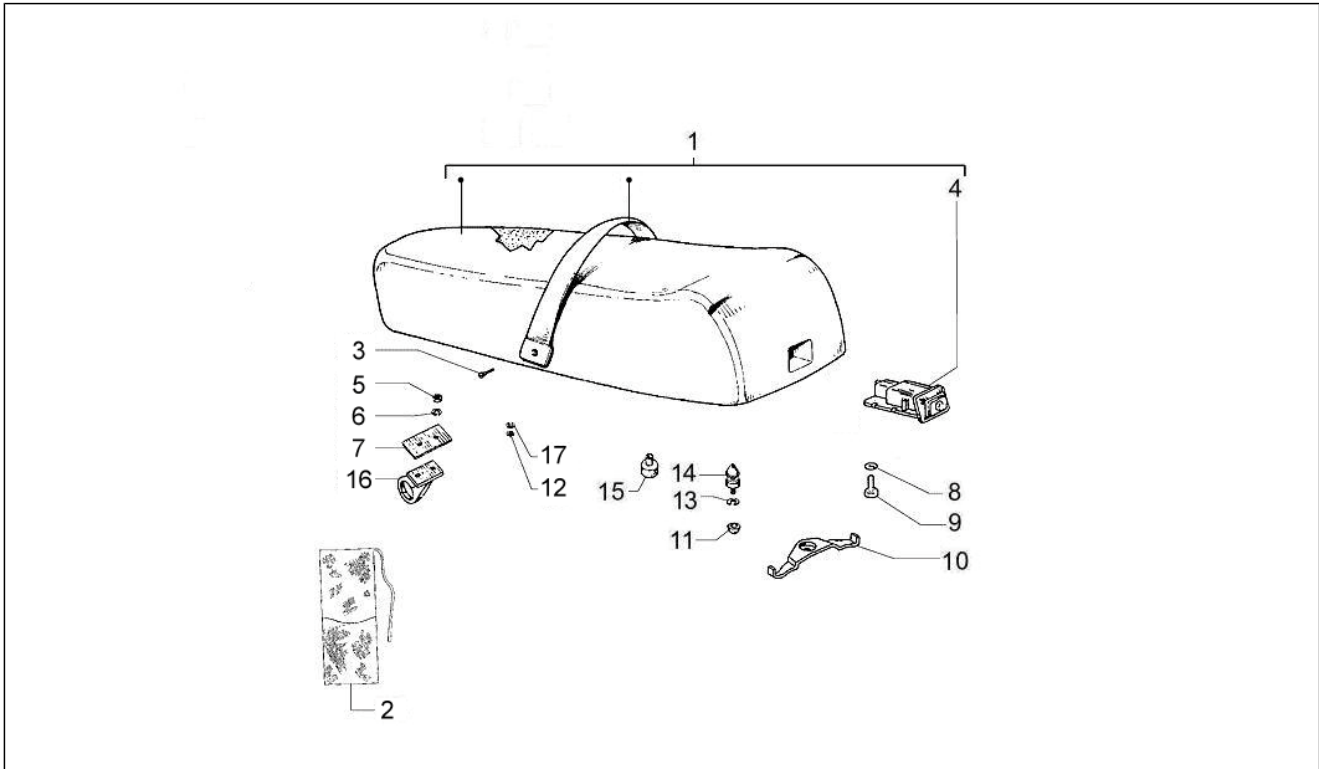
Pos.	Code	Description	Qty	Variants
1	6727925	Steering cover	1	
2	003055	Plain washer 5,4x10x0,8	3	
3	015911	Screw	2	
4	008372	Screw d3,5x13	1	

Group	Frame - Plastic parts - Coachwork
Code	02.38
Description	Plates - Emblems
Service	1



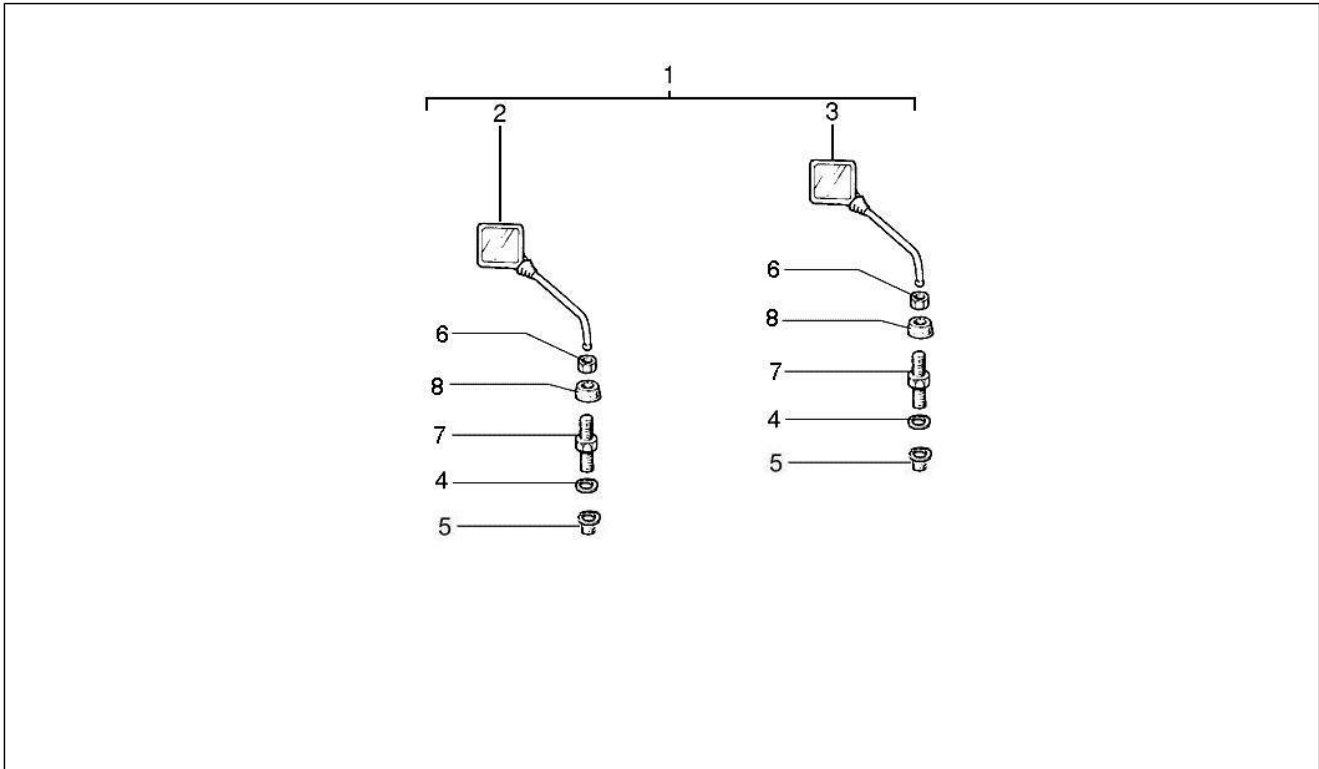
Pos.	Code	Description	Qty	Variants
1	673234	Targhetta "PX125"	1	
2	576464	Shield "Piaggio"	1	
3	199190	Slide piece	1	
4	656219	Targhetta frontale "Vespa"	1	
5	656220	Targhetta laterale "Vespa"	1	

Group	Frame - Plastic parts - Coachwork
Code	02.39
Description	Saddle/seats - Tool roll
Service	1



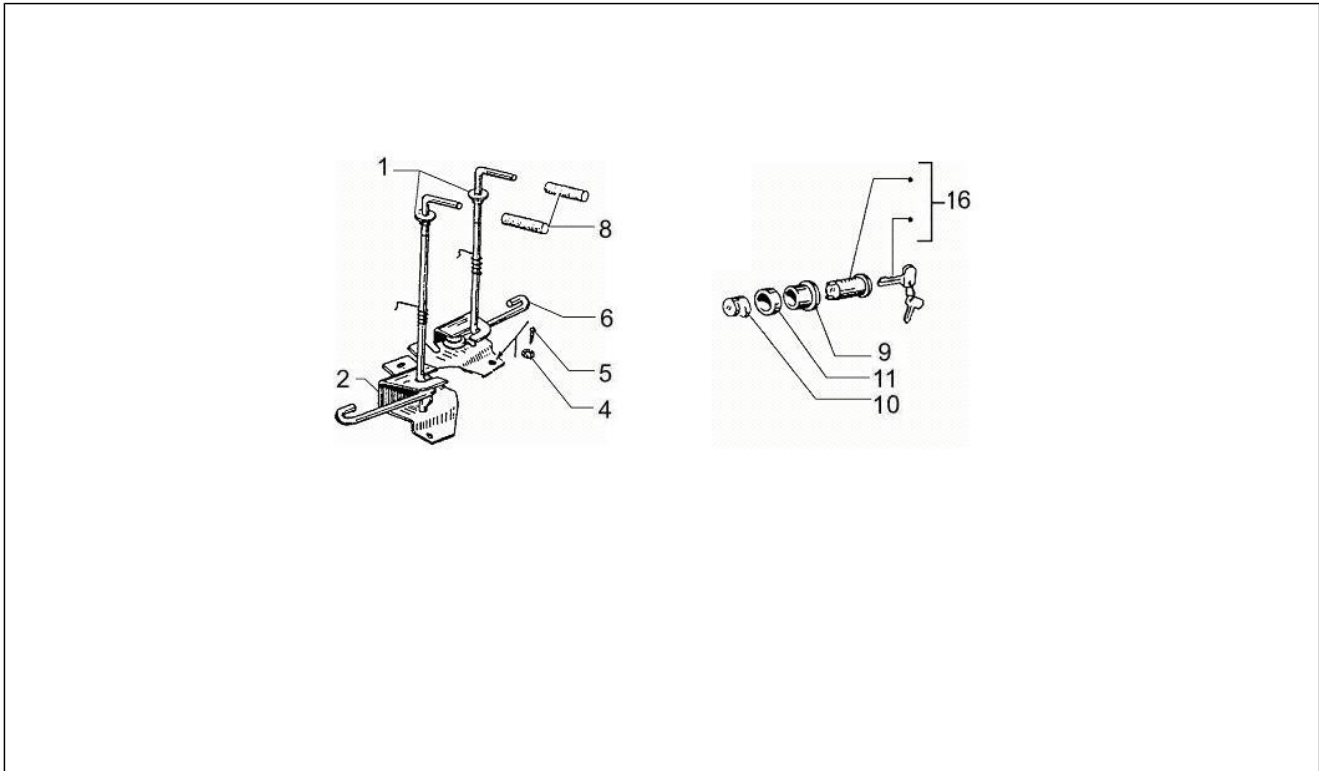
Pos.	Code	Description	Qty	Variants
1	673291	Not available	1	
2	561867	Tool roll	1	
3	016673	Washer	2	
4	577267	Chromium-plated lock	1	
5	195482	Self locking nut	2	
6	016405	Spring washer	3	
7	057371	Plate	1	
8	013763	Flat washer 4,2x12x1	3	
9	031027	Screw	3	
10	219857	Plate	1	
11	240166	Cup	1	
12	003058	Washer 15x8,4x1,5	6	
13	012540	Notched washer 14x8,3x1,8	1	
14	240165	Pin	1	
15	267420	Drift	4	
16	227153	Hook for bag	1	
17	016408	Spring washer 13,75x8,15x4,5	7	

Group	Frame - Plastic parts - Coachwork
Code	02.45
Description	Driving mirror/s
Service	1



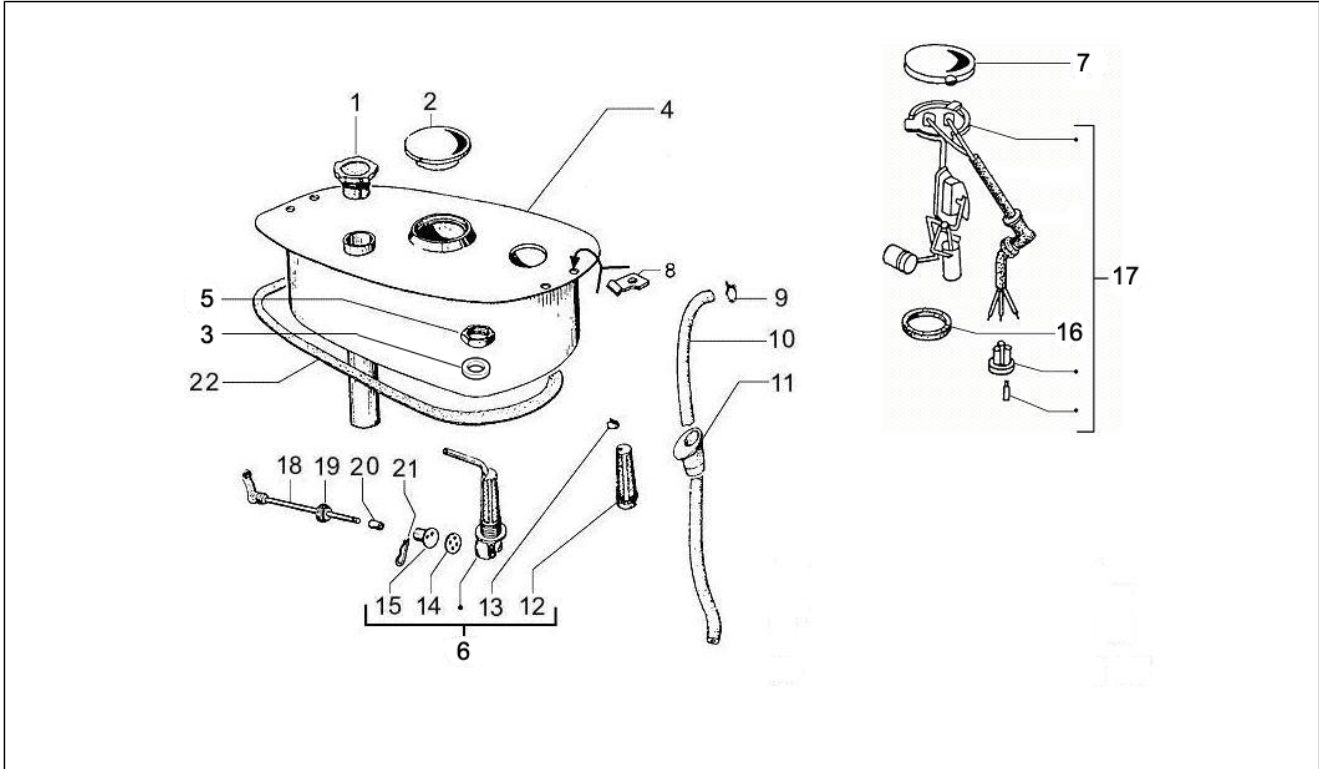
Pos.	Code	Description	Qty	Variants
1	CM028003	Coppia specchi retrovisori (FIEM)	1	
2	CM028001	Specchio retrovisore SX (Fiem)	1	
3	CM028002	Specchio retrovisore DX (Fiem)	1	
4	007609	Washer	2	
5	125998	Cap	2	
6	227673	Nut	2	
7	622391	Support	2	
8	622427	Gasket	2	

Group	Frame - Plastic parts - Coachwork
Code	02.46
Description	Locks
Service	1



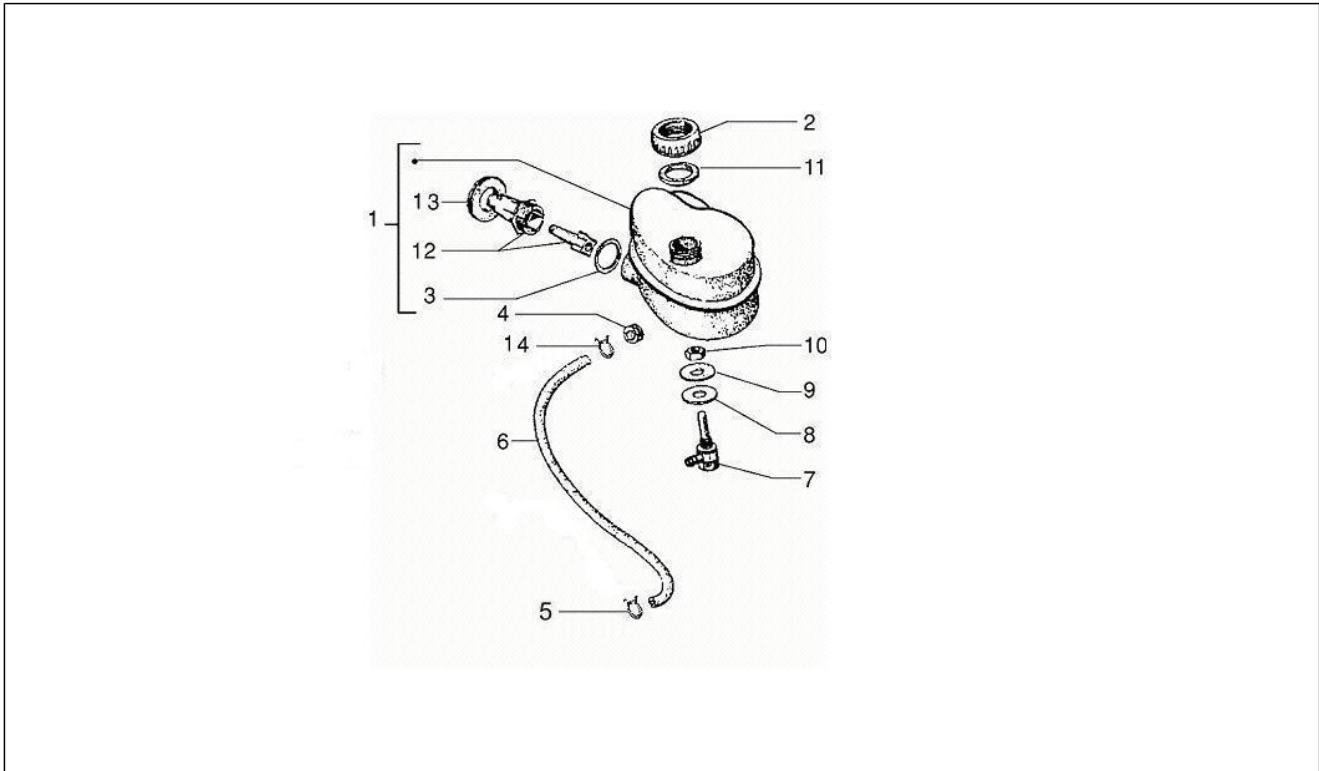
Pos.	Code	Description	Qty	Variants
1	178209	Bush	2	
2	244093	Plate	1	
4	012532	Washer 5,3x10x0	9	
5	008265	Screw	4	
6	227229	Plate	1	
8	178689	Sheath	2	
9	297777	Lock body	1	
10	178563	Washer	1	
11	178562	Block	1	
16	179292	Cylinder set	1	

Group	Frame - Plastic parts - Coachwork
Code	02.47
Description	Fuel tank
Service	1



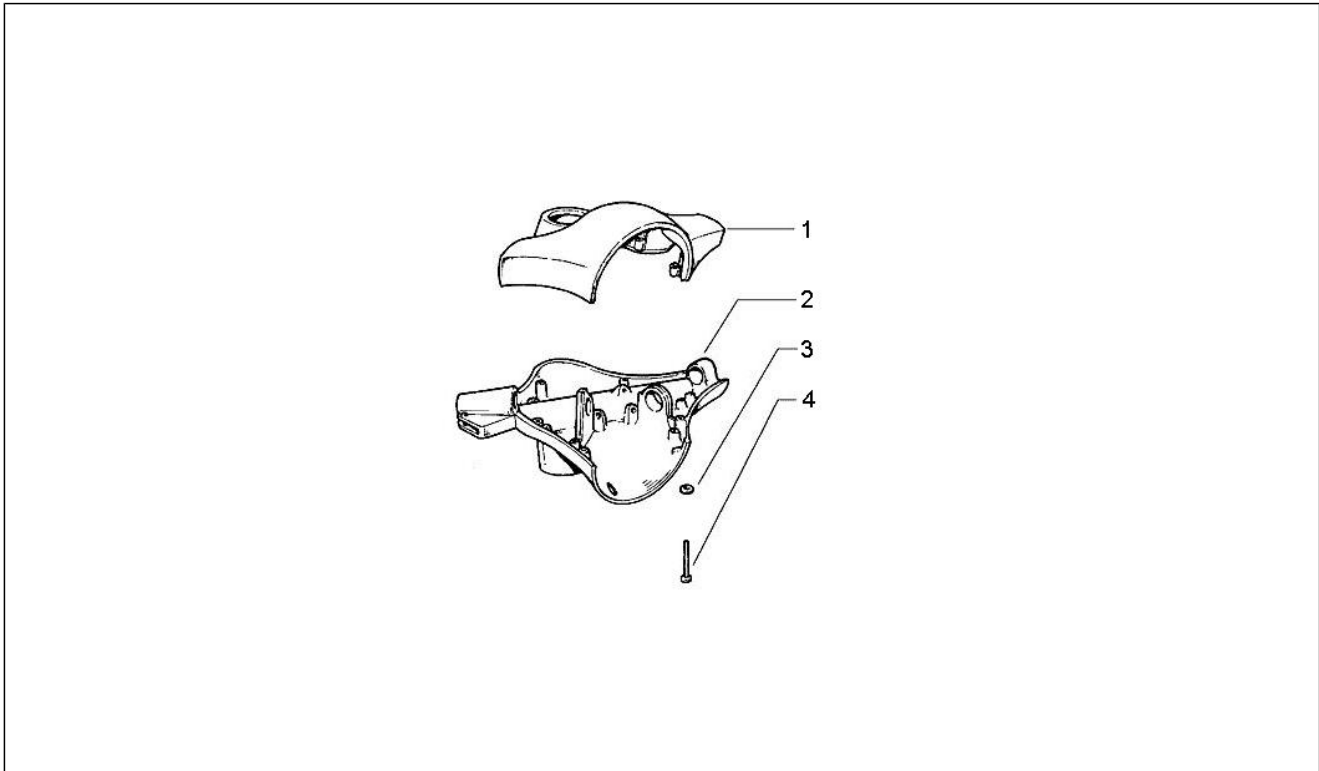
Pos.	Code	Description	Qty	Variants
1	102585	Oil ins.pl.	1	
2	575825	Tank cap	1	
3	139933	Gasket	1	
4	2283725	Tank	1	
5	138935	Nut	1	
6	217872	Cock	1	
7	219002	Cover	1	
8	230365	Plate	1	
9	CM002910	Hose clamp	1	
10	146504	Pipe	1	
11	084262	Union	1	
12	138934	Filter	1	
13	175330	Hose clamp	1	
14	414779	Gasket	1	
15	046168	Plug	1	
16	228354	Gasket	1	
17	228090	Fuel level gauge	1	
18	217871	Rod	1	
19	194631	Gasket	1	
20	083139	Pipe	1	
21	015467	Spring	1	
22	159804	Gasket	1	

Group	Frame - Plastic parts - Coachwork
Code	02.52
Description	Oil tank
Service	1



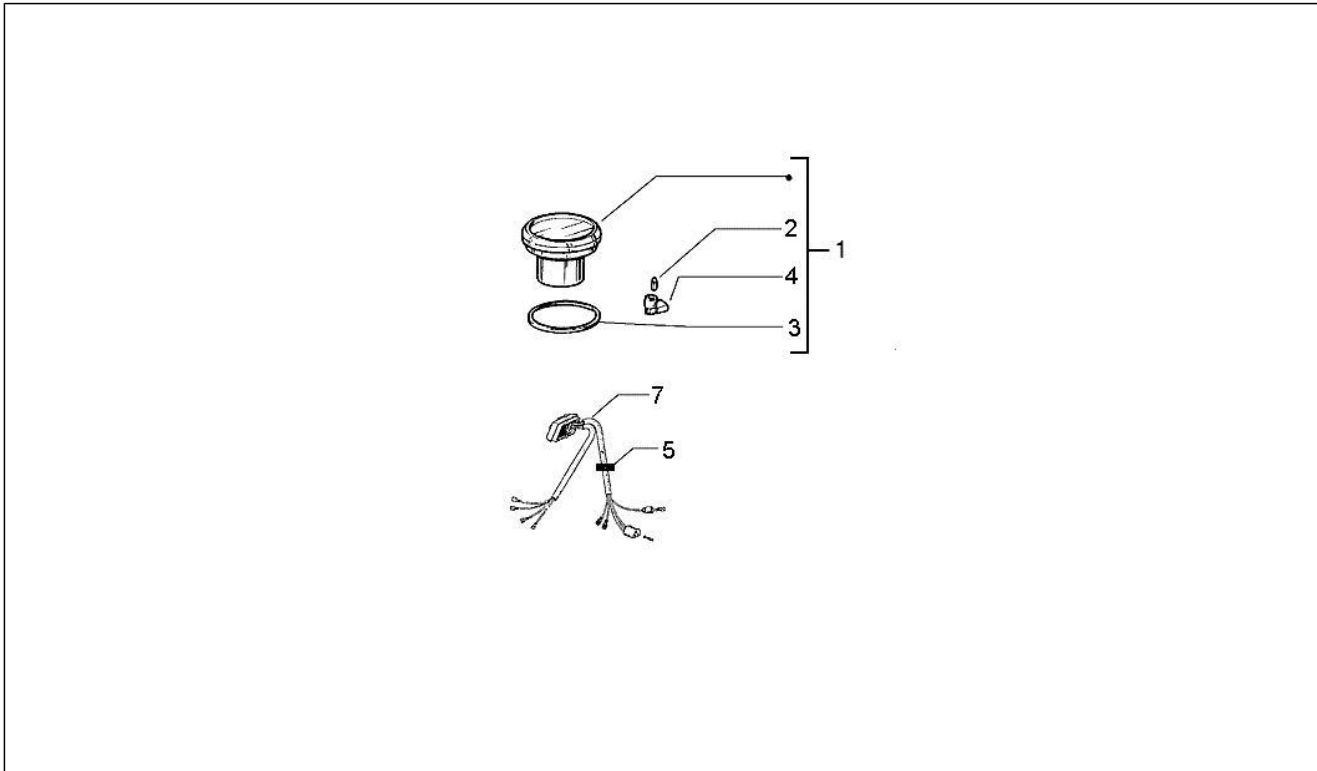
Pos.	Code	Description	Qty	Variants
1	623139	Oil tank	1	
2	156490	Ring nut	1	
3	102587	Gasket	1	
4	015478	Fairlead	1	
5	CM002904	Hose clamp	1	
6	CM002311	Oil pipe	1	
7	156038	Union	1	
8	245451	Washer	1	
9	296172	Gasket	1	
10	021210	Nut	1	
11	156491	Gasket	1	
12	623140	Bicchiera spia olio	1	
13	102586	Gasket	1	
14	CM002904	Hose clamp	1	

Group	Handlebars/Steering
Code	03.01
Description	Handlebars coverages
Service	1



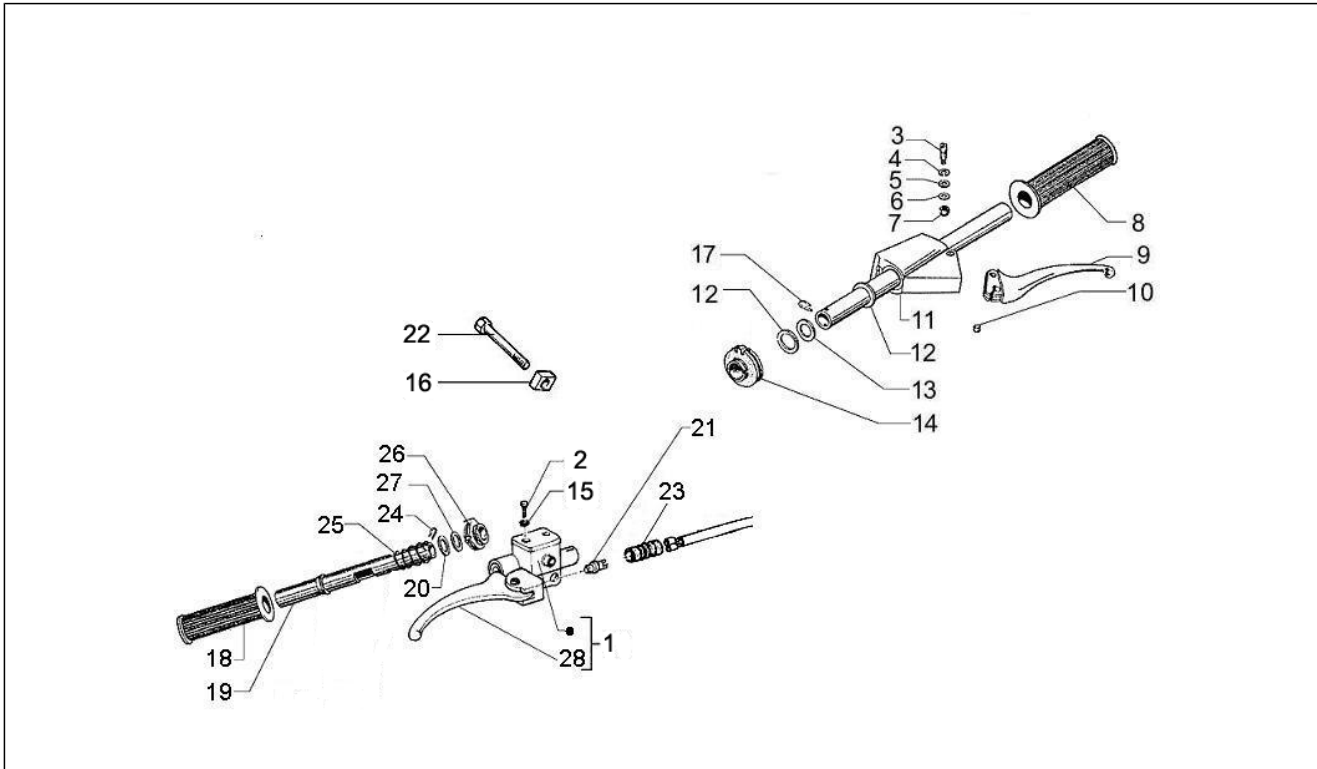
Pos.	Code	Description	Qty	Variants
1	6224306	Handlebar cover	1	
2	5637895	Lower handlebar cover	1	
3	003055	Plain washer 5,4x10x0,8	4	
4	015835	Screw	4	

Group	Handlebars/Steering
Code	03.02
Description	Meter combination - Cruscotto
Service	1



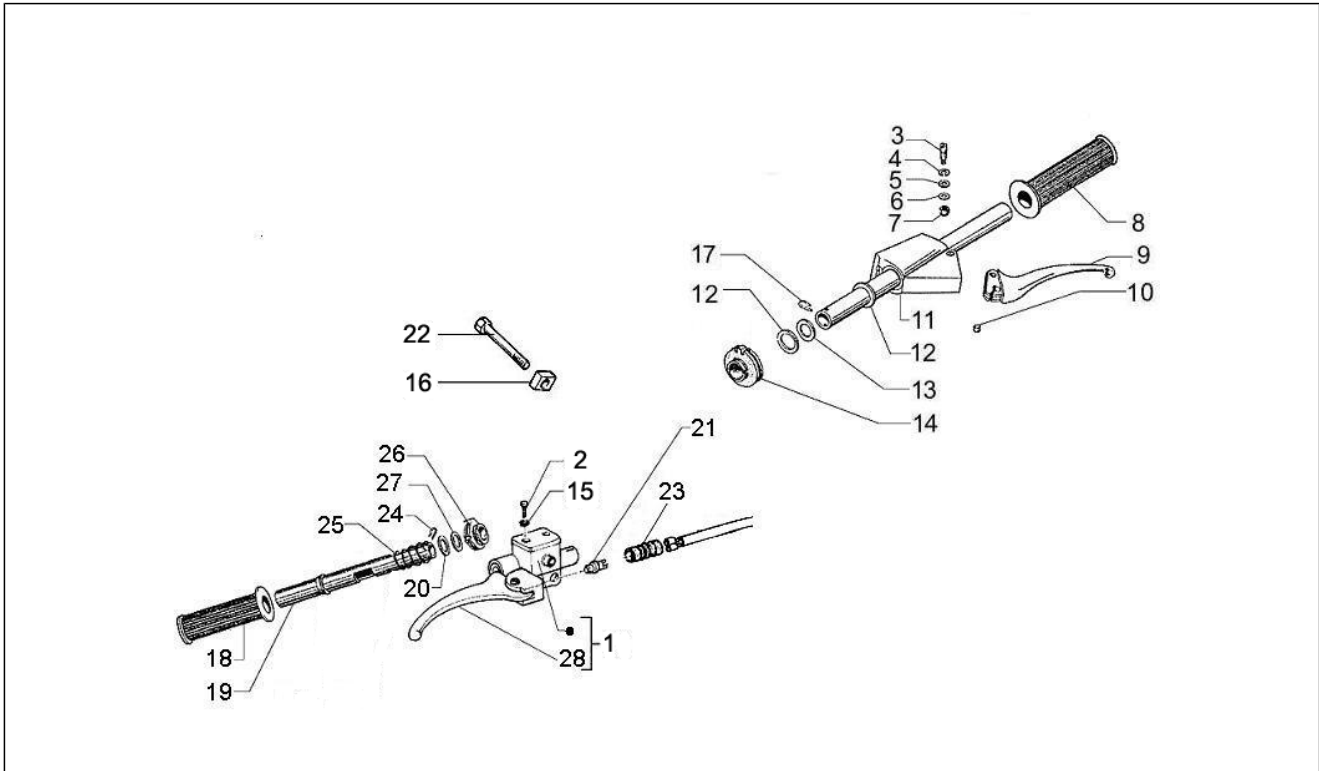
Pos.	Code	Description	Qty	Variants
1	583074	Speed.kms	1	
2	164634	Lampada 12v-1.2w	5	
3	179230	Gasket	1	
4	214191	Lampholder	5	
5	145298	Fascetta a strappo	1	
7	582964	Cable harness	1	

Group	Handlebars/Steering
Code	03.06
Description	Handlebars - Master cil.
Service	1



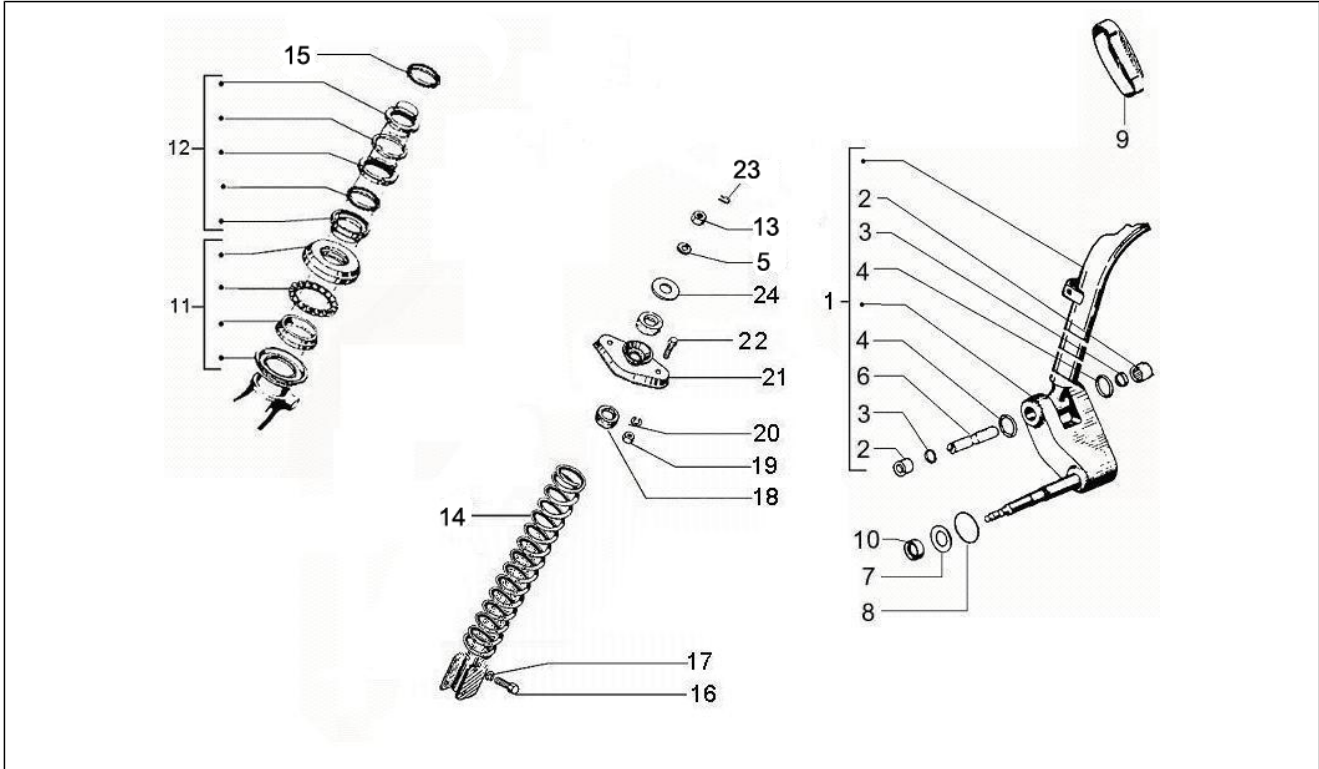
Pos.	Code	Description	Qty	Variants
1	56219R	Brakes pump	1	
2	599009	Vite fissaggio cavalletto laterale	2	
3	150235	Screw	1	
4	017492	Washer	1	
5	097734	Washer	1	
6	097733	Flat washer 5,3x14x1	1	
7	012112	Nut	1	
8	CM083805	LH hand grip	1	
9	2425314	Brake lever	1	
10	018699	Terminal	1	
11	2193565	Gear control tube	1	
12	101474	Washer	2	
13	139890	Washer	1	
14	139797	Gear change control pulley	1	
15	709047	Spring washer 8,4X15X1,5	2	
16	070620	Nut	1	
17	137267	Split pin	1	
18	CM083806	RH hand grip	1	
19	139778	Throttle	1	
20	139890	Washer	1	
21	642032	stop Button	1	
22	655554	Hex socket screw M10x65	1	
23	327145	Bellows	1	
24	137267	Split pin	1	
25	175369	Spring	1	
26	139796	Pulley	1	
27	181762	Washer	2	
28	646805	Leva freno (Grimeca)	1	

Group	Handlebars/Steering
Code	03.06
Description	Handlebars - Master cil.
Service	1



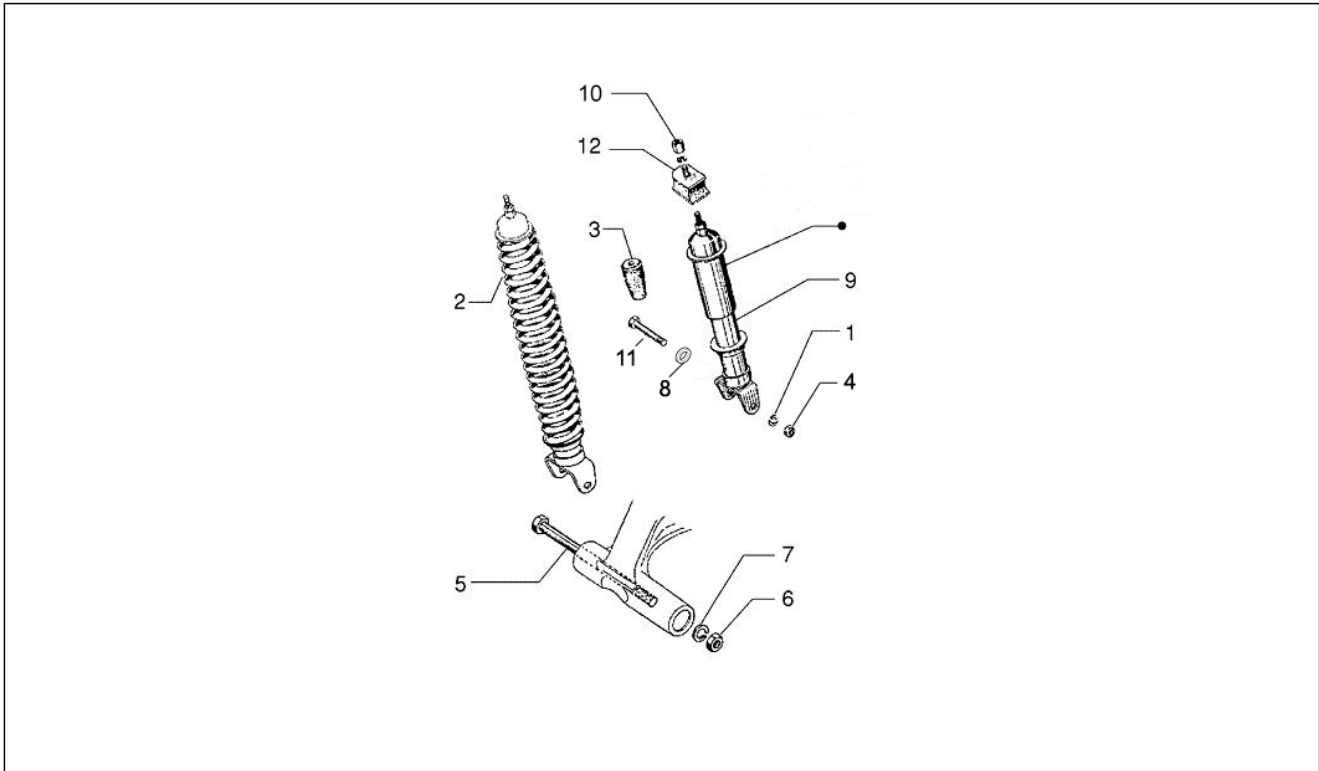
Pos.	Code	Description	Qty	Variants
28	646806	Leva freno (Heng T.)	1	

Group	Suspensions - Wheels
Code	04.07
Description	Front suspension - Shock absorber/s
Service	1



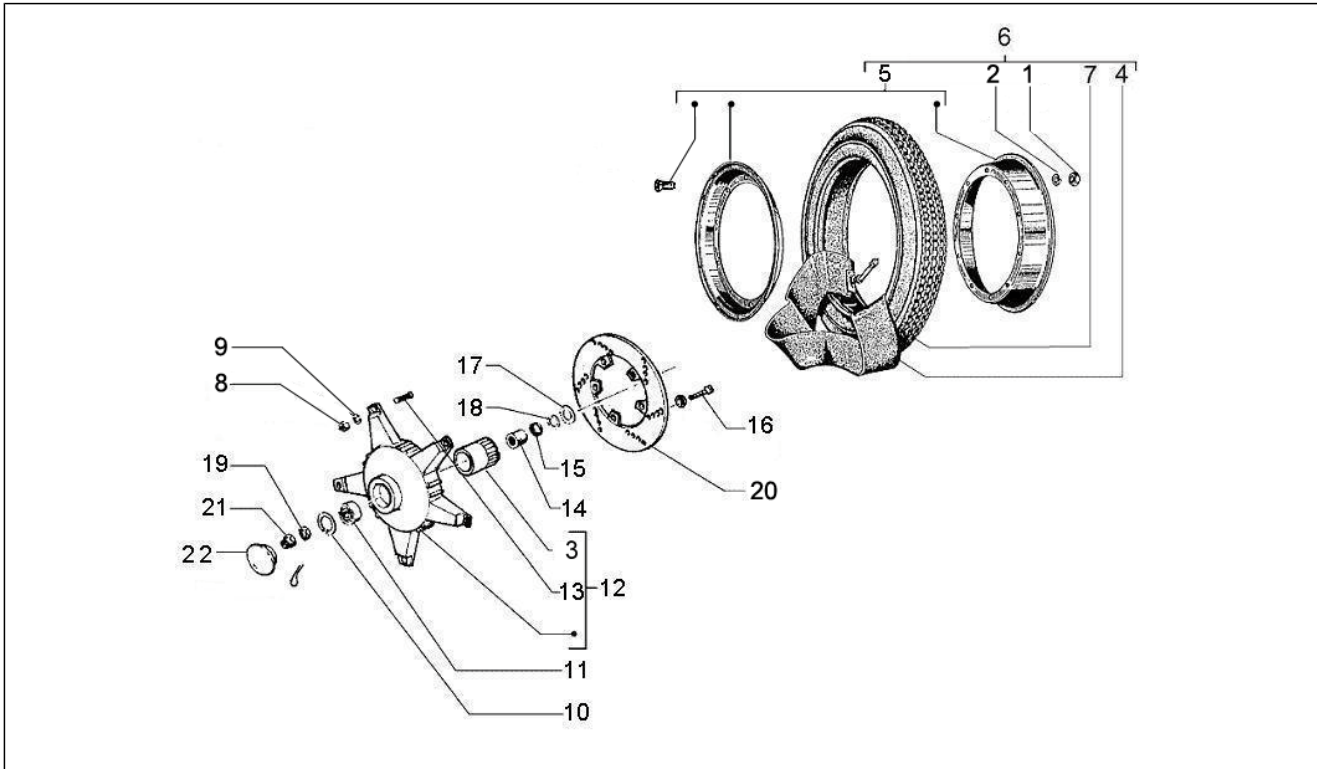
Pos.	Code	Description	Qty	Variants
1	5640715	Steering tube	1	
2	198513	Drawn cap	2	
3	119219	Oil seal	2	
4	006731	Gasket	2	
5	667058	Spring washer	1	
6	177451	Piston pin	1	
7	177445	Washer	1	
8	177408	Ring	1	
9	564222	Plug	1	
10	177521	Ring	1	
11	650075	Ralla inferiore	1	
12	650693	Upper thrust ring	1	
13	021210	Nut	1	
14	58570R	Front shock absorber cpl.	1	
15	0037514	Rondella dello sterzo	1	
16	149104	Hex socket screw M8x40	2	
17	709047	Spring washer 8,4X15X1,5	2	
18	174085	Drift	2	
19	020108	Nut M8x6,5	2	
20	016408	Spring washer 13,75x8,15x4,5	2	
21	174806	Plate	1	
22	031119	Screw	2	
23	012789	Split pin	1	
24	174088	Washer	1	

Group	Suspensions - Wheels
Code	04.10
Description	Rear suspension - Shock absorber/s
Service	1



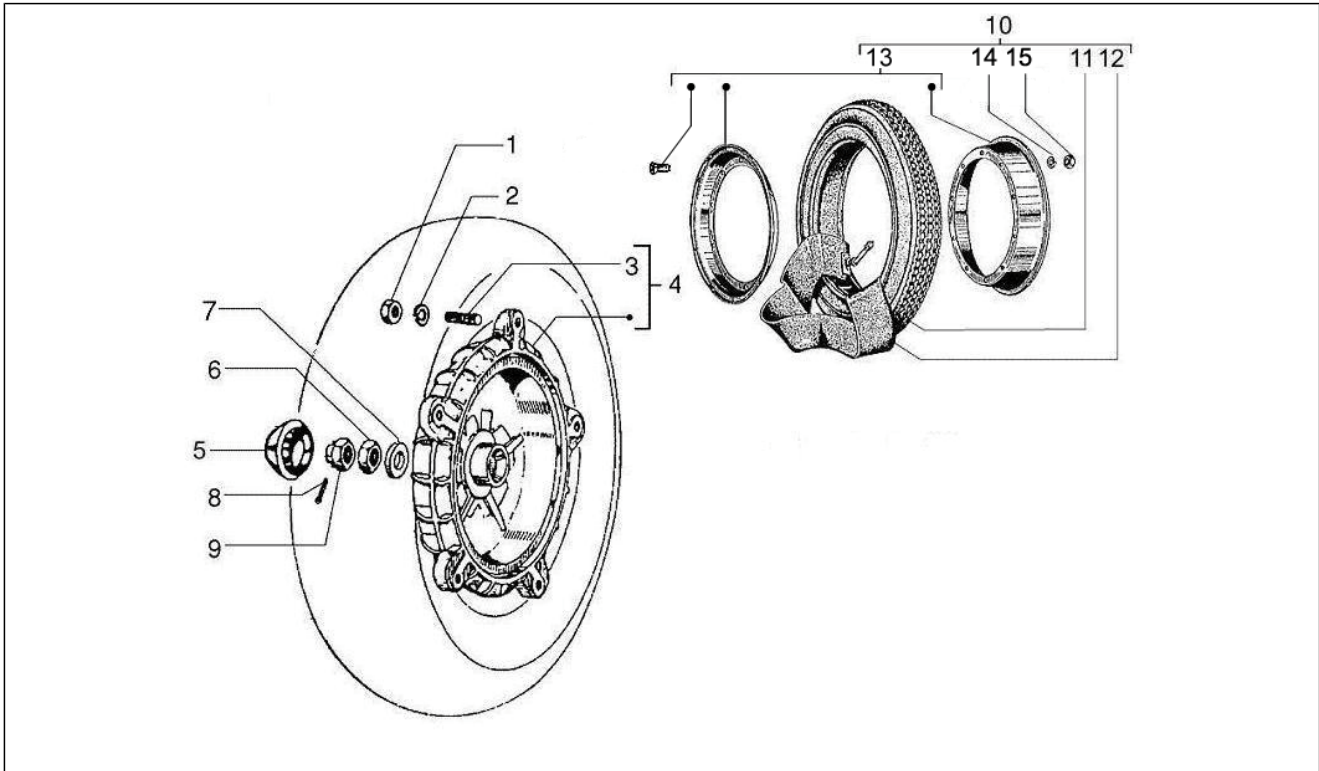
Pos.	Code	Description	Qty	Variants
1	667060	Spring washer	1	
2	179108	Spring	1	
3	137389	Drift	1	
4	020210	Nut	1	
5	081803	Bolt	1	
6	021214	Nut	1	
7	667062	Spring washer	1	
8	667061	Spring washer	1	
9	58571R	Rear shock absorber	1	
10	020008	Nut M8	1	
11	030102	Vite	1	
12	060536	Support	1	

Group	Suspensions - Wheels
Code	04.11
Description	Front wheel
Service	1



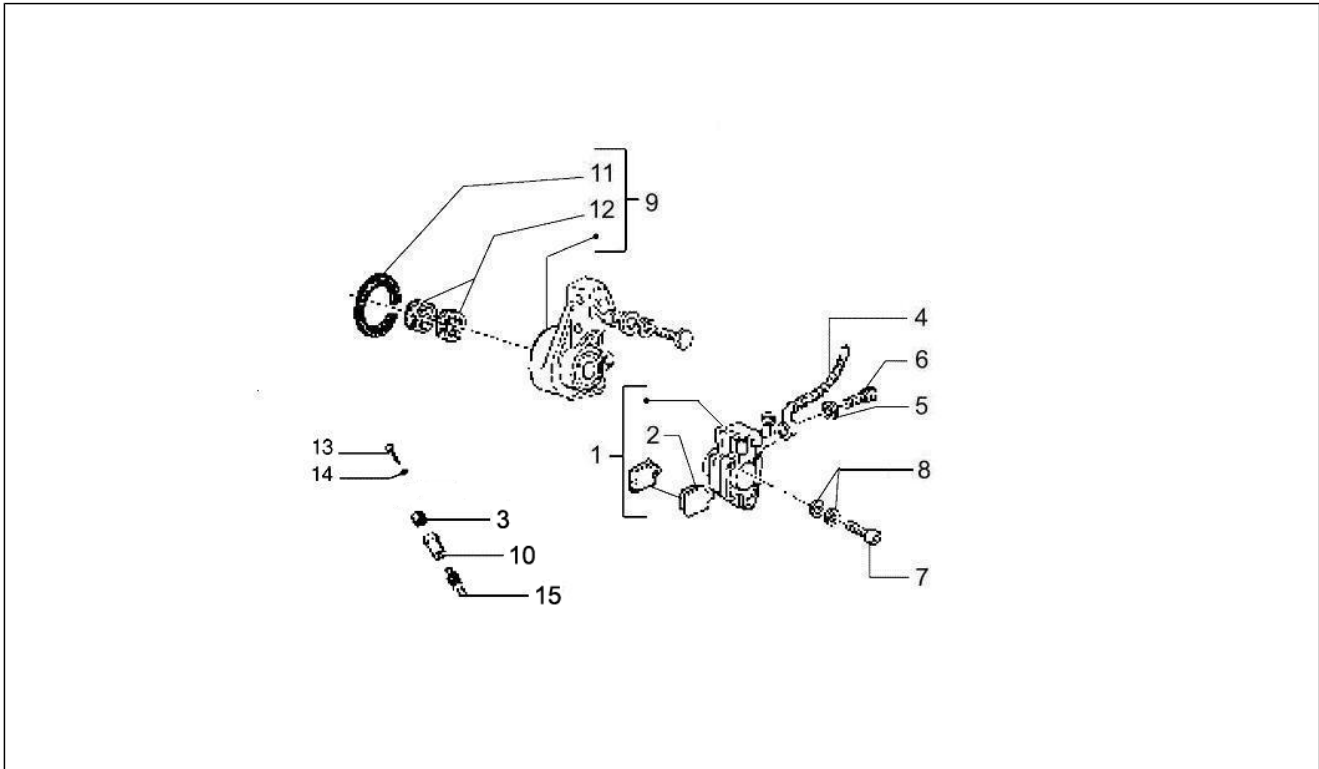
Pos.	Code	Description	Qty	Variants
1	020108	Nut M8x6,5	5	
2	016408	Spring washer 13,75x8,15x4,5	5	
3	563873	Chain ring	1	
4	240241	Tubular braid	1	
5	0846315	Wheel rim, assy.	1	
6	597452	Wheel	1	
7	597453	Tyre	1	
8	020008	Nut M8	5	
9	667059	Spring washer	5	
10	006635	Snap ring	1	
11	177610	Bearing	1	
12	563762	Brake drum	1	
13	229796	Stud bolt	5	
14	177442	Needle bearing	1	
15	177443	Gasket ring	1	
16	271147	Hex socket screw M6x20	5	
17	177414	Washer	1	
18	006422	Ring	1	
19	021114	Nut	1	
20	56395R	Front brake disc	1	
21	177609	Cap	1	
22	197983	Plug	1	

Group	Suspensions - Wheels
Code	04.12
Description	Rear wheel
Service	1



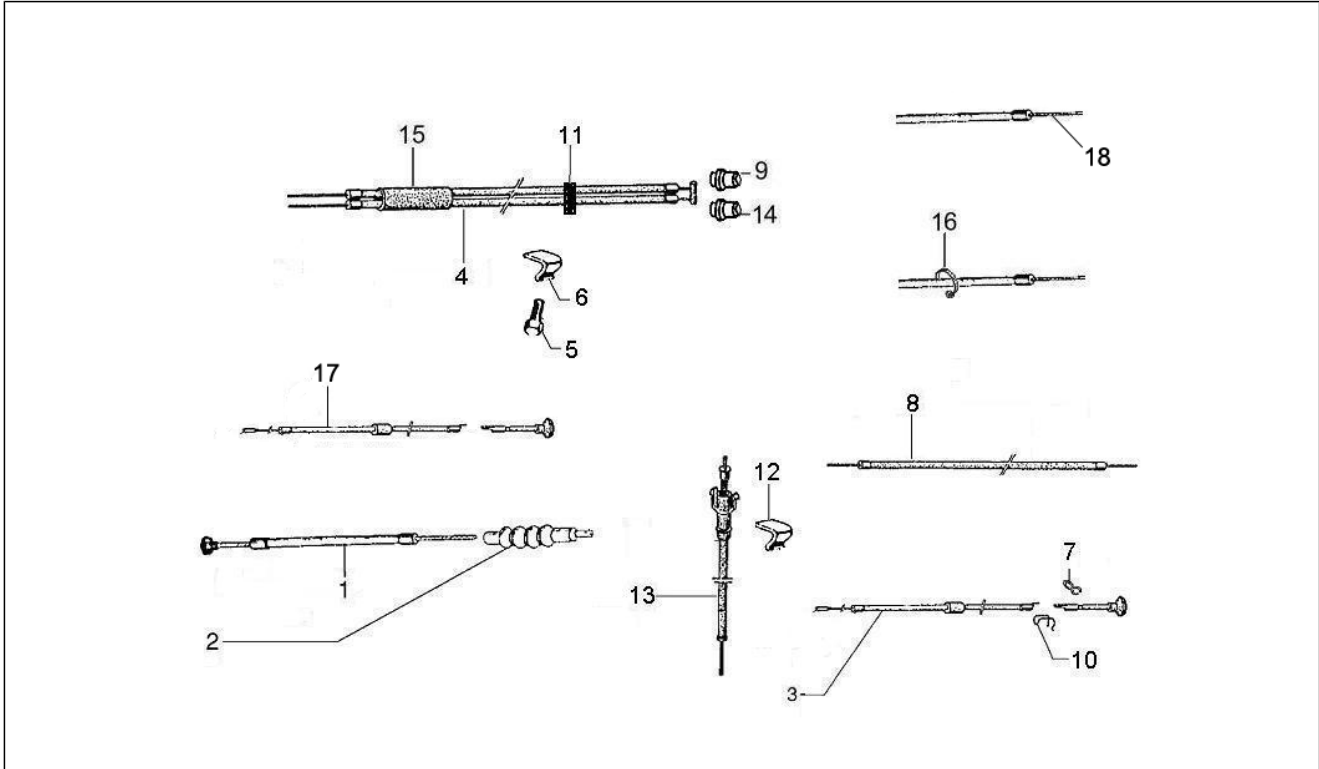
Pos.	Code	Description	Qty	Variants
1	020008	Nut M8	5	
2	667059	Spring washer	5	
3	229796	Stud bolt	5	
4	2427724	Rear brake bracket	1	
5	415519	Plug	1	
6	563728	Nut M16x13	1	
7	827708	Flat washer	1	
8	012789	Split pin	1	
9	194423	Cap	1	
10	597452	Wheel	1	
11	597453	Tyre	1	
12	240241	Tubular braid	1	
13	0846315	Wheel rim, assy.	1	
14	016408	Spring washer 13,75x8,15x4,5	5	
15	020108	Nut M8x6,5	5	

Group	Braking system - Transmissions
Code	05.01
Description	Brakes pipes - Calipers
Service	1



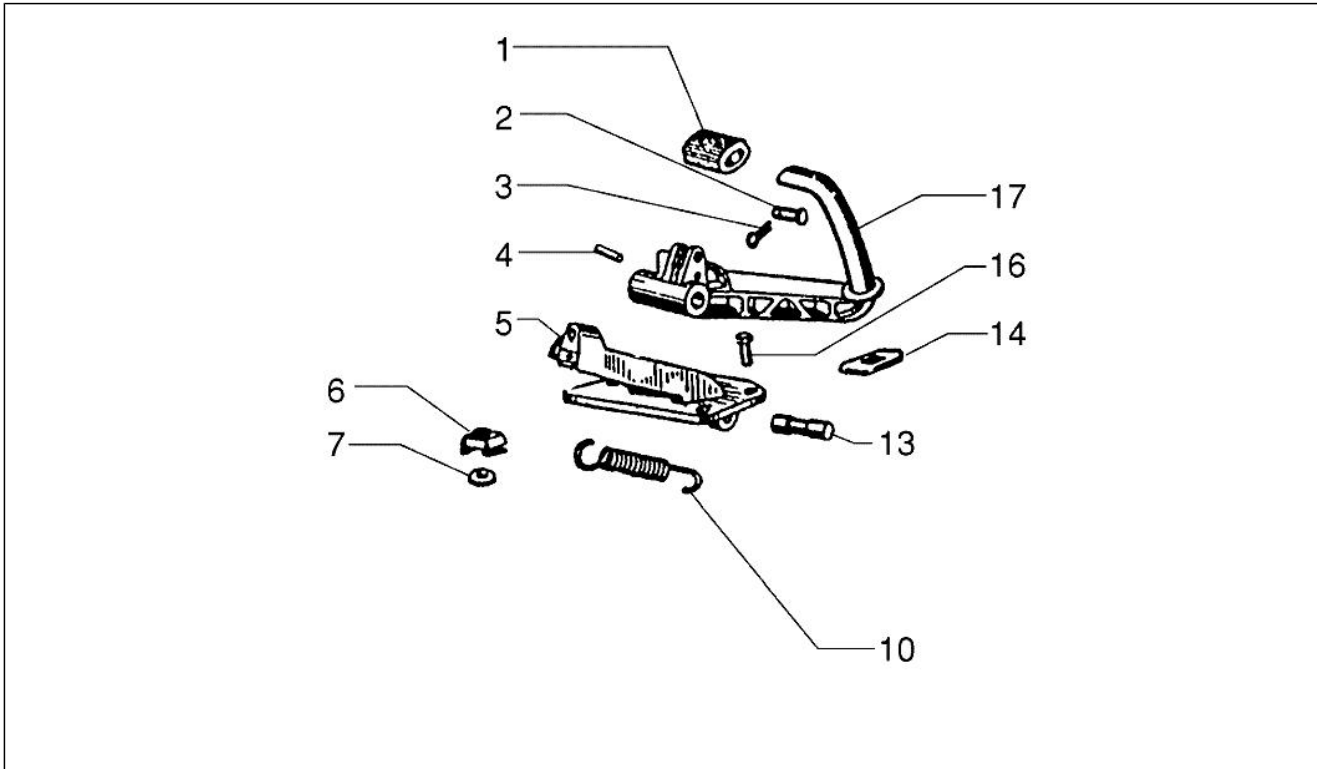
Pos.	Code	Description	Qty	Variants
1	58573R	Pinza idraulica freno ant.	1	
2	647176	Coppia pasticche freno	1	
3	266841	Drift	1	
4	563806	Pipe	1	
5	127927	Gasket	2	
6	265451	Oil pipe screw	1	
7	271596	Screw	2	
8	709047	Spring washer 8,4X15X1,5	2	
9	563804	Support	1	
10	564053	Support	1	
11	177494	Ring	1	
12	177436	Drawn cap	2	
13	031057	Screw	3	
14	006975	Washer 5,3x10x0,5	1	
15	177508	Pinion	1	

Group	Braking system - Transmissions
Code	05.03
Description	Transmissions
Service	1



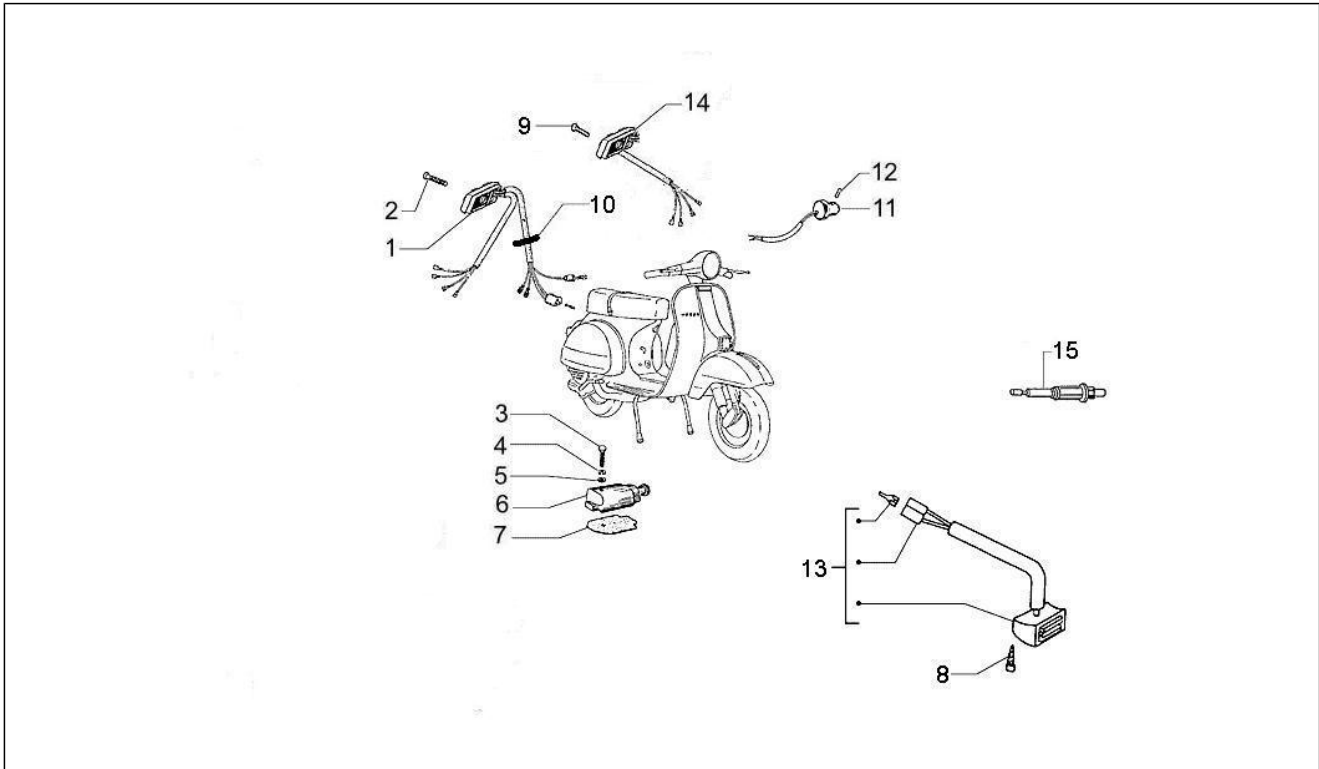
Pos.	Code	Description	Qty	Variants
1	272606	Clutch transmission	1	
2	156401	Protection	1	
3	667208	Choke transmiss.	1	
4	646566	Gear change transmission	2	
5	015946	Bolt	1	
6	269273	Hose clamp	1	
7	050207	Spring	1	
8	667181	Gas lever transmission	1	
9	580906	Terminal	2	
10	183321	Spring	1	
11	152210	Hose clamp	1	
12	601102	Plate	1	
13	601105	Speedometer transmission	1	
14	580908	Terminal	1	
15	090541	Pipe	1	
16	145298	Fascetta a strappo	2	
17	090574	TIRANTE CON POMELLO	1	
18	191804	Brake transmiss.	1	

Group	Braking system - Transmissions
Code	05.05
Description	Control pedals - Levers
Service	1



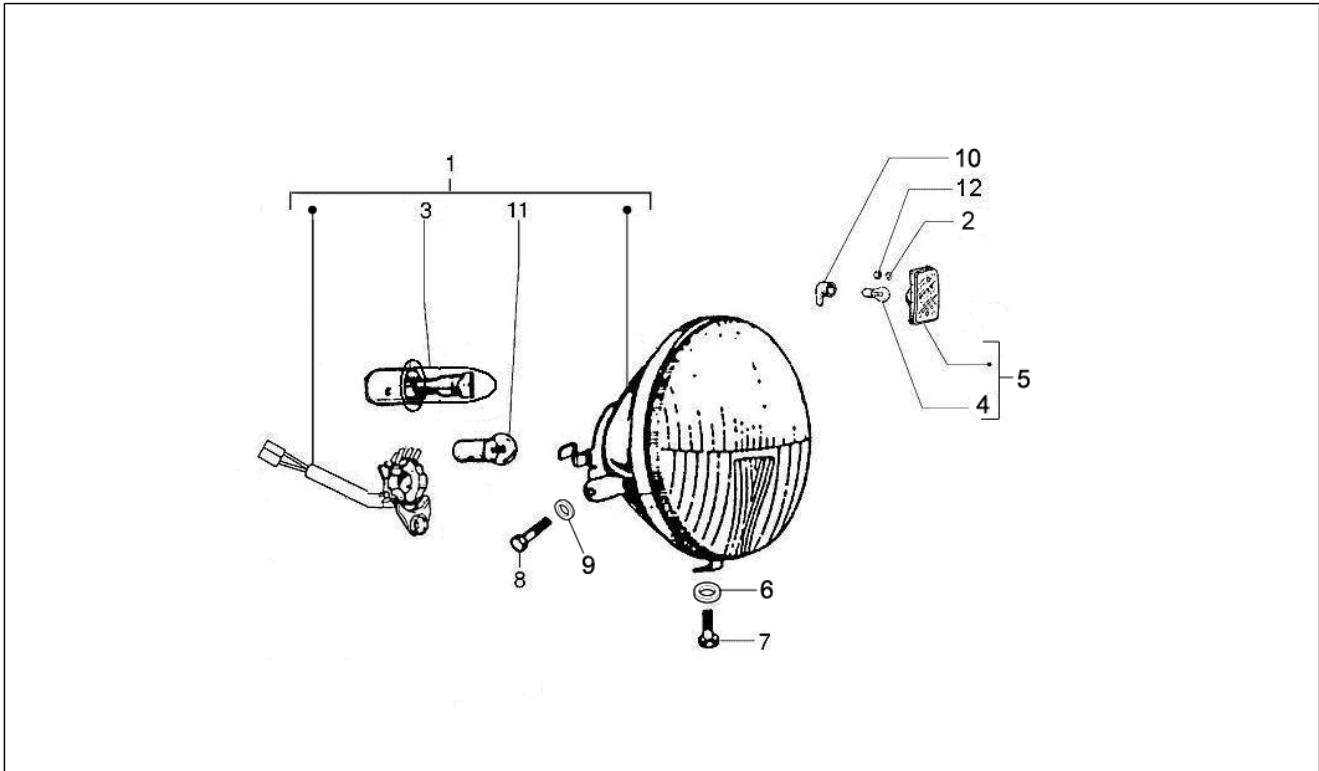
Pos.	Code	Description	Qty	Variants
1	266299	Protection	1	
2	071165	Pin	1	
3	012761	Split pin	1	
4	008818	Con. pin	1	
5	1384746	Pedal bracket	1	
6	182872	Nut	1	
7	003056	Flat washer 6,4x12x1	11	
10	070994	Return spring	1	
13	183124	Pin	1	
14	194380	Gasket	1	
16	031091	Hex screw M6x22	2	
17	182049	Brake lever	1	

Group	Electrical system
Code	06.01
Description	Selectors - Switches - Buttons
Service	1



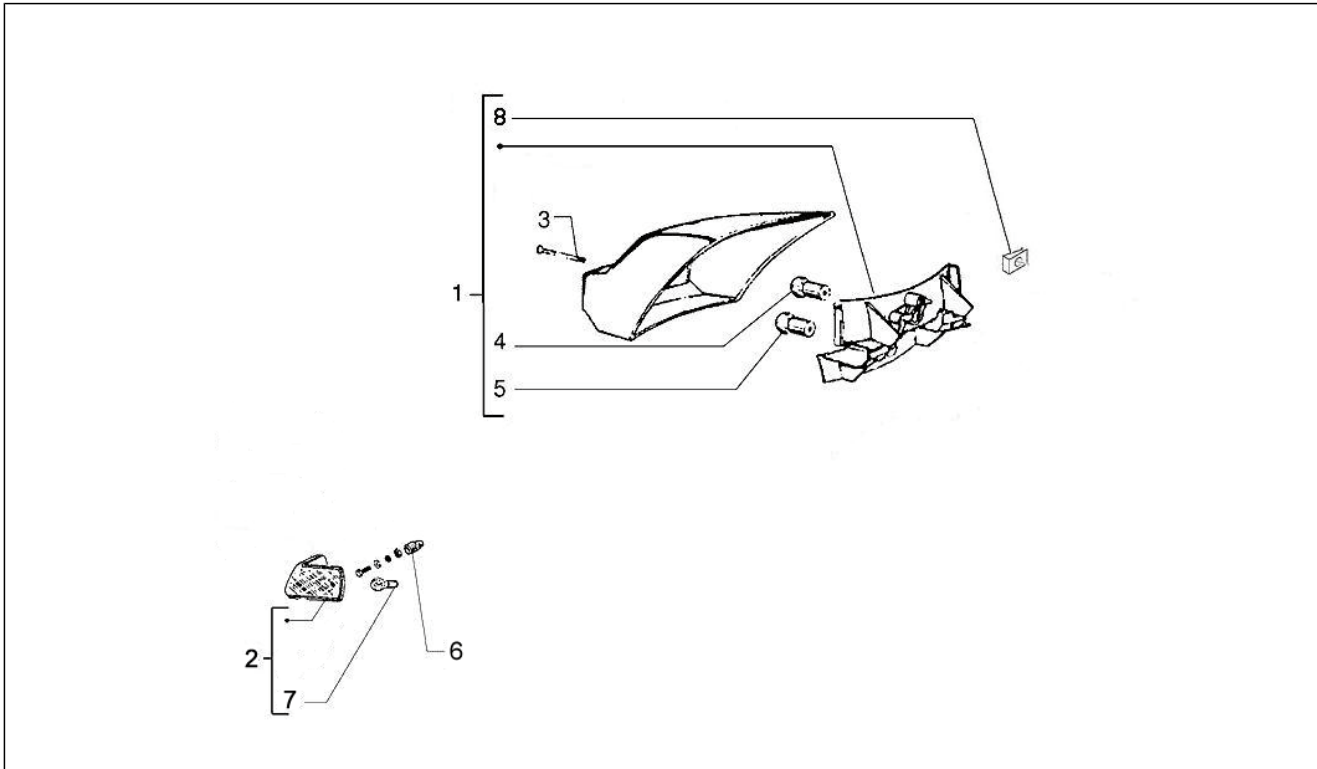
Pos.	Code	Description	Qty	Variants
1	583090	Lights switch	1	
2	018503	Bolt	1	
3	031033	Hex socket screw	1	
4	003054	Washer 4,3x8x0,5	5	
5	016404	Flat washer 4,2x7,6x0,9	1	
6	181881	Switch	1	
7	070144	Gasket	1	
8	018527	Screw	2	
9	018503	Bolt	1	
10	145298	Fascetta a strappo	1	
11	231024	Switch	1	
12	018515	Dowel	1	
13	580937	Starting button	1	
14	580395	Turn signal lamps switch	1	
15	583330	Start pushbutton	1	

Group	Electrical system
Code	06.03
Description	Front headlamps - Turn signal lamps
Service	1



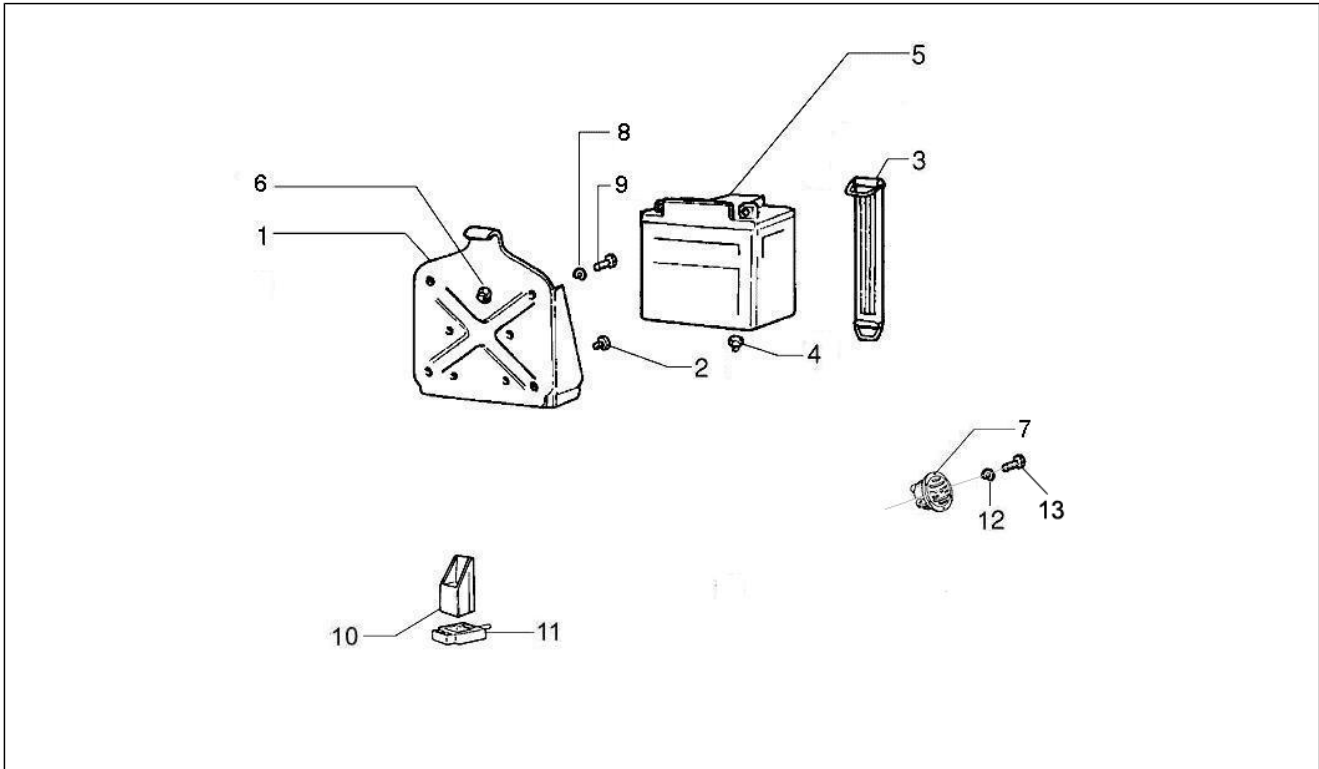
Pos.	Code	Description	Qty	Variants
1	582946	Headlamp	1	
2	003054	Washer 4,3x8x0,5	4	
3	231215	Lamp	1	
4	584004	Lamp	2	
5	638761	Turn sig. lamp	1	
5	638762	Turn sig. lamp	1	
6	013763	Flat washer 4,2x12x1	1	
7	031027	Screw	1	
8	015585	Self-tapping screw	2	
9	012532	Washer 5,3x10x0	1	
10	182599	Cap	2	
11	292022	Lamp 12V-5W	1	
12	020104	Nut M4	4	

Group	Electrical system
Code	06.04
Description	Rear headlamps - Turn signal lamps
Service	1



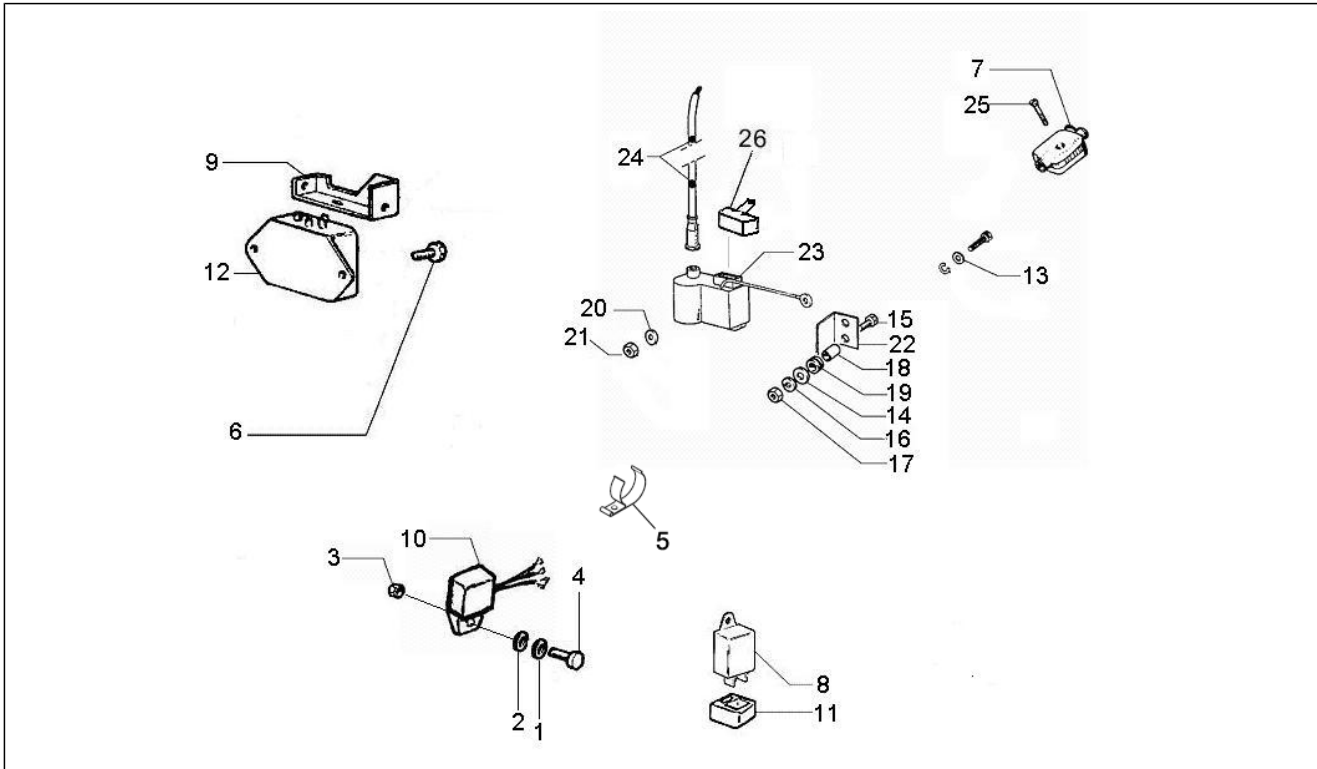
Pos.	Code	Description	Qty	Variants
1	583081	Headlight	1	
2	638763	Turn sig. lamp	1	
2	638764	Turn sig. lamp	1	
3	015994	Screw 3,5x19*	2	
4	181746	Lamp R10W 12v	1	
5	181747	Bulb 12v-5w	1	
6	230320	Cap	2	
7	584004	Lamp	1	
8	254485	Spring plate M6	1	

Group	Electrical system
Code	06.05
Description	Remote control switches - Battery - Horn
Service	1



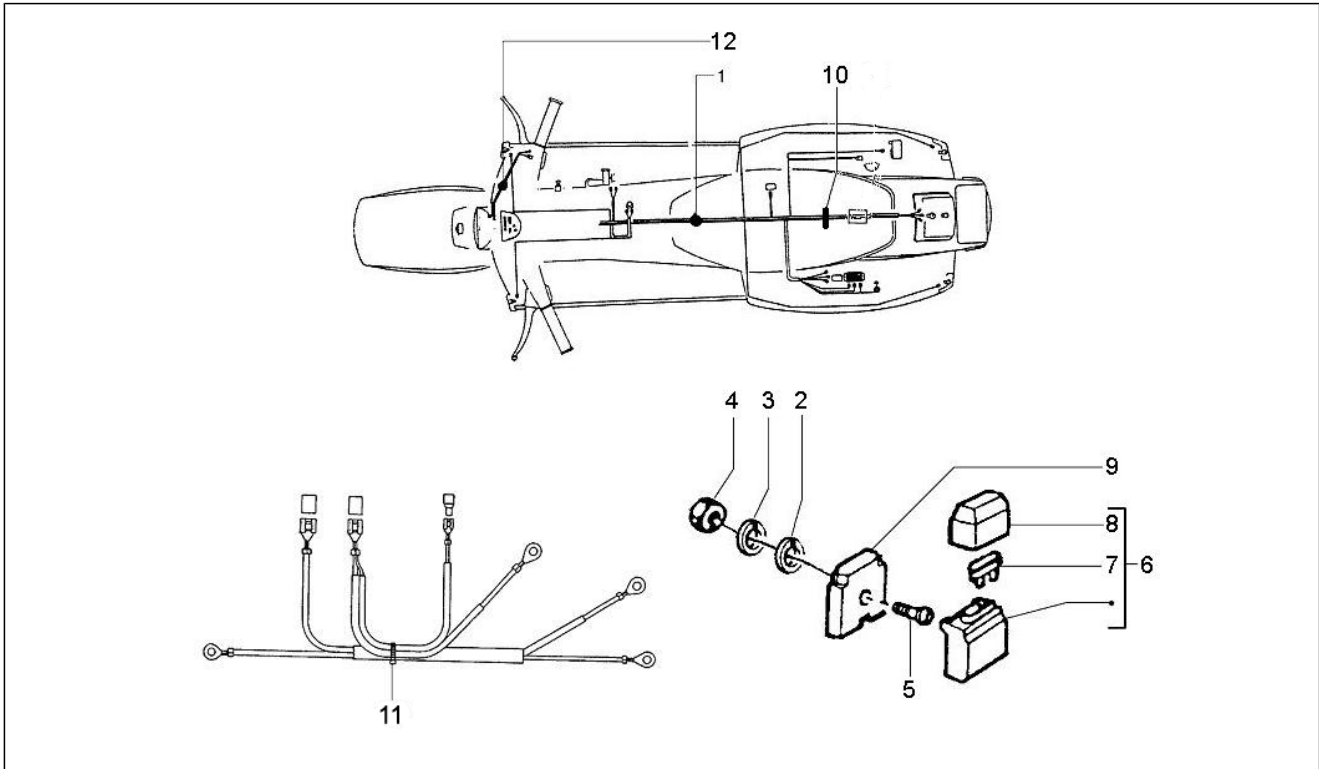
Pos.	Code	Description	Qty	Variants
1	230750	Cage	1	
2	230051	Drift	4	
3	218812	Belt	1	
4	216895	Drift	2	
5	584810	Battery 12V-9Ah	1	
6	191962	Nut	4	
7	58144R	Horn 12v cc	1	
8	006976	Spring washer 12x6,4x0,5	4	
9	031086	Screw m6x12	4	
10	58115R	Starter relay 12V-80A	1	
11	272842	Flexible support	1	
12	013963	Washer	4	
13	015994	Screw 3,5x19*	4	

Group	Electrical system
Code	06.06
Description	Voltage Regulators - Electronic Control Units (ecu) - H.T. Coil
Service	1



Pos.	Code	Description	Qty	Variants
1	003056	Flat washer 6,4x12x1	1	
2	016406	Spring washer 6,4x11,8x1	1	
3	020106	Nut M6	1	
4	031088	Vite M6x16	1	
5	232661	Spring	1	
6	008375	Screw M6x14	2	
7	179895	Bracket	1	
8	195703	Unit turn signal lamps	1	
9	195740	Protection	1	
10	233707	Device	1	
11	291017	Flexible support	1	
12	2308245	Regulator	1	
13	003055	Plain washer 5,4x10x0,8	2	
14	006018	Washer	4	
15	015597	TBIC screw	2	
16	016405	Spring washer	2	
17	020005	Nut	2	
18	141589	Bush	2	
19	141590	Drift	2	
20	016406	Spring washer 6,4x11,8x1	2	
21	020106	Nut M6	2	
22	179504	Clamp	1	
23	244128	Electr. ignition	1	
24	127966	Terminal	1	
25	015881	Screw	1	
26	179503	Cappuccio centralina elettronica	1	

Group	Electrical system
Code	06.08
Description	Main cable harness
Service	1



Pos.	Code	Description	Qty	Variants
1	580347	Cable harness	1	
2	012554	Washer	1	
3	013782	Flat washer	1	
4	020003	Nut m3	1	
5	031088	Vite M6x16	4	
6	290402	Fuse holder	1	
7	252945	Fuse 7,5A	1	
8	290404	Cover	1	
9	290405	Bracket	1	
10	145298	Fascetta a strappo	2	
11	218820	Cable harness	1	
12	580617	Gr. cavetti pulsante stop	1	